

THE STATE OF TEXAS)
 :
 COUNTY OF WINKLER)

On this the 14th day of January, 2013, the Commissioners' Court of Winkler County, Texas, met in Regular Term of Court at the Courthouse in Kermit, Texas, with the following members present, to-wit:

Bonnie Leck	County Judge
Billy Stevens	Commissioner, Precinct No. 1
Robbie Wolf	Commissioner, Precinct No. 2
Randy Neal	Commissioner, Precinct No. 3
Billy Ray Thompson	Commissioner, Precinct No. 4
Pam Greene	Chief Deputy County Clerk and Ex-Officio Clerk of Commissioners' Court

constituting the entire Court, at which time the following among other proceedings were had:

At 9:00 o'clock A.M. Judge Leck called the meeting to order and asked for matters of business from the audience.

The Court received report from James Everett, Supervisor, Winkler County Emergency Medical Service.

The Court heard presentation of Bill Betcher concerning pistol shooting range in County. No action was taken at this time.

Following presentation of Cory Cates regarding trail fees at Winkler County Golf Course, a motion was made by Commissioner Neal and seconded by Commissioner Stevens to set public meeting with John Leavitt, Golf Course Superintendent, the Golf Course Advisory Board, Winkler County Commissioners' Court and Two Pro Management to discuss trail fees at the Winkler County Golf Course; which motion became an order of the Court upon the following vote:

Ayes: Commissioners Stevens, Wolf, Neal and Thompson
 Noes: None

A motion was made by Commissioner Neal and seconded by Commissioner Thompson to approve payment in the amount of \$15,980.00 to DACO for four (4) SCBA's for Kermit Volunteer Fire Department with \$11,985.00 to be reimbursed by grant from Texas A&M Forest Service and \$3,995.00 from budgeted funds; which motion became an order of the Court upon the following vote:

Ayes: Commissioners Stevens, Wolf, Neal and Thompson
 Noes: None



3.2244

KERMIT VFD
P.O. BOX 262
KERMIT, TX 79745

Case: 1090

Dear Chief:

Your application for grant assistance under the Rural Volunteer Fire Department Assistance Program (HB 2604) has been **APPROVED**. The following items are qualified for cost-share reimbursement:

<u>Item</u>	<u>Our Maximum Cost-share Payment</u>
	75% of the actual cost, not to exceed
RESCUE EQUIPMENT	\$11,985.00

This grant will expire May 30, 2013

The attached guidelines describe your obligations under this program. Please indicate below whether you wish to accept or decline this grant, and return a signed copy to us within 14 days of receipt of this letter.

Congratulations! Please contact us if you need additional information.

Texas A&M Forest Service

☒ Accept ☐ Decline

Steve B. Walker
Signature and Title

12-21-12
Date

DJF/xx (rescue.doc)

Attach: 1) Guidelines for Grant Assistance

Texas A&M Forest Service
Forest Resource Protection • 200 Technology Way, Suite 1162 • College Station, Texas 77845-3424
TEL 979/458-6505 • FAX 979/845-6160
<http://tfs.tamu.edu>

DACO

201 AVENUE R • LUBBOCK, TEXAS 79408 • PHONE 806-548-1014 • FAX 806-763-9151

Quotation

TO: Kermit FD
DATE: 7-24-12
PHONE
ATTENTION: Steve Williams
SUBJECT: SCBA
FAX:

WE ARE PLEASED TO QUOTE YOU THE FOLLOWING PRICES:

Scott AP75 SCBA.....\$15980.00
Includes: 4 SCBA, 4 AV3000, 4 aluminum cylinders

3995.00 each
15980.00 - Total
11985.00 - TFS
3995.00 - Cont.

Shipment is scheduled for after receipt of your order.

TERMS:
F.O.B.:

We appreciate this opportunity to quote you and
thank you for your inquiry.

Cordially yours,
LANCE BARRETT

A motion was made by Commissioner Neal and seconded by Commissioner Thompson to table request of City of Kermit for funds to purchase radio dispatch console replacement for further research; which motion became an order of the Court upon the following vote:

Ayes: Commissioners Stevens, Wolf, Neal and Thompson
Noes: None



MIP 5000

VoIP Radio Console

The MIP 5000 VoIP Radio Console is designed to provide customers an affordable solution to transmit dispatch quality voice over their existing multicast enabled Ethernet network. The MIP 5000 radio console connects up to 100 users with flexible licensing that is available with 1, 4, 8, 12 and 24 channel software options. In addition, up to 128 radio resources can be connected to the network and configured in the Console System Database Manager (CSDM). Configuration files can be saved on each operator position which will allow a dispatcher to access & control different combinations of radio resources (up to 24 at a time). The console system consists of two parts: a Graphical User Interface (GUI) and a Radio Gateway(s).

Flexible and Customizable User Interface

MIP 5000 features the familiar MCC 5500 Graphical User Interface (GUI) that minimizes user-training requirements. The intuitive and familiar GUI is based on Microsoft Windows with pull-down menus, icons and tool tips. The flexible and customizable GUI provides multiple screen layouts (folders) to organize resources by agency, shift, or any criteria that meets the needs of the console user(s). The GUI provides extensive user options for full color control of the display and re-sizeable windows and icons. To save time, dispatchers have Page History and Activity Log windows always available for real time status information.

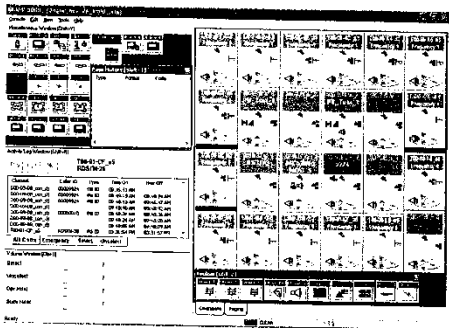
Customizable Channel Control

MIP 5000 VoIP radio channels are customizable with various controls, such as patch status, frequency select, coded/clear select, and individual volume control based on user preferences. Per channel controls can be fully or partially shown, or hidden to save space on the screen. Busy dispatchers can respond to a missed call by simply clicking on an entry in the Activity Log. The number of calls and call information displayed in the Activity Log is customizable to suit the needs of the user(s). Mobile (or SB9600) resources on the PC console display the radio channel name as the top line of the resource window. The second and third lines of the resource window display the control head text as supplied by the radio.

In the Activity Log, Unit IDs or Alias names for PTT-IDs and Emergency Alarms are displayed. The Activity Log will display ASTRO PTT-IDs, Emergency Alarm and Emergency Call information when Mobile (or SB9600) radios with ASTRO signaling are used.

Key Features

MIP 5000 is a full featured console including capabilities of Multi-select (APB), Single Button Page. For Local and Tone resources, DTMF Decode and MDC 1200 signaling is supported. MDC signaling features include: PTT ID Alias, Emergency, Call Alert, Selective Call, Frequency Select and Radio Enable / Disable, Voice Alert, Remote Monitor, Status Request, Repeater Enable/Disable, and Manual RAC. Mobile (or SB9600) resources mimic the control head functionality, including all buttons and display for specific Motorola radios.



Interoperability

MIP 5000 allows users to patch communication between dissimilar radios with an easy drag and drop capability. Patches may contain active Call Director telephone calls. The MIP 5000 console meets the standard for Level 4 Interoperability with dispatcher controlled radio to radio patching.

Licensing

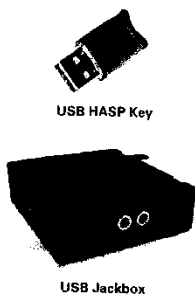
A hardware USB HASP key is required at each operator position to license and enable radio resources. USB HASP keys are available in 1, 4, 8, 12, or 24 resource configurations

MIP 5000 Console Operator Position

Audio processing, including routing and intelligence for the MIP 5000 console is performed within each software-based operator position, without additional centralized electronics. The Console System Database Manager (CSDM) is a single point for configuring the entire console system. This centralized approach saves valuable time and effort for system administrators and technicians. MIP 5000 operator position features a built-in network monitoring tool that alerts the operator when real-time Ethernet network conditions like packet loss, jitter and latency may be affecting audio quality. This feature is designed to aid radio service and IT personnel in system troubleshooting.

DATA SHEET

MIP 5000
VoIP Radio Console



MIP 5000 Audio Accessories

A MIP 5000 USB Jackbox provides the MIP 5000 operator position with access to standard (non-USB) accessories. Two kinds of USB Jackboxes are available: Basic and Enhanced. The Basic USB Jackbox provides access for up to three accessories: a Plantronics two prong headset, plus the Motorola Desktop Gooseneck Microphone and Foot-Switch. The Enhanced USB Jackbox provides all of the accessory capability of the Basic Jackbox plus offers an auxiliary jack for access to one of five options: a) Call Director, b) External Paging Encoder or c) Analog Recorder, d) PTT, e) MDC Emergency Alarm output.

Jackbox Limits:
1 headset per Jackbox
1 footswitch per Jackbox
2 headsets maximum per operator position
3 Jackboxes maximum per operator position (any combination of Basic or Enhanced)

Compatibility

MIP 5000 software is compatible with Microsoft operating systems XP Professional-SP3 and VISTA Business Edition SP1 deployed on a desktop or laptop computer. Note: It is strongly recommended that public safety customers use Motorola certified desktop and laptop computers.

Trunked or Conventional

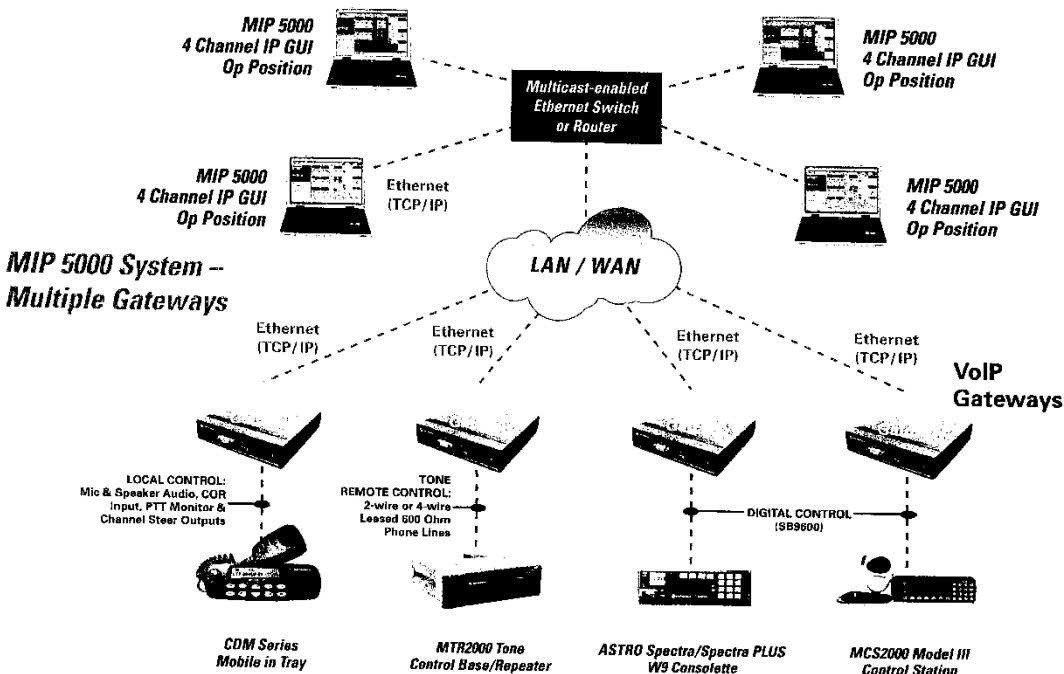
The MIP 5000 console interfaces with trunked and conventional radio systems. In addition, the MIP 5000 Local, Tone or Digital Gateways can work in parallel with existing console systems for backup or migration applications.

MIP 5000 VoIP Radio Gateway

The MIP 5000 radio gateway provides access to multiple radio types including local control, tone control and Motorola digital control. Each gateway interfaces to one 2-way radio.

Network and VPN

MIP 5000 dispatch console system requires a multicast enabled network that lets UDP packets through and is secure, non-congested and is QoS enabled. Gateways must be installed on a secure network, not the Internet. MIP 5000 console position(s) may operate on the same network as the gateways or operate remotely using a router to router VPN tunnel over the Internet. Additional hardware may be required for VPN set up.



DATA SHEET

MIP 5000
VoIP Radio Console

COMPUTER REQUIREMENTS	
Microsoft Windows XP Computer	Microsoft Windows Vista Computer
Intel® Pentium 4 (or better) personal computer, 1.5 GHz (or faster)	Intel® Core™ 2 Duo (or better) personal computer, 2.13 GHz (or faster)
1 GB or more RAM	2 GB or more RAM
20 GB hard drive, CD-ROM drive	80 GB hard drive, DVD-ROM drive
Two serial ports, one parallel port, two USB ports1, and 10/100 Base T Ethernet Adapter	Four USB ports, and 10/100 Base T Ethernet adapter
SVGA display adapter with minimum 1024 x 768 resolution, 256 colors and16 MB RAM	PCI Express video adapter with 128 MB SDRAM minimum
Integrated high-definition audio adapter (SoundBlaster® X-Fi Xtreme Audio sound card equivalent or better)	
Additional USB ports are required to support up to three USB jack-boxes. A USB 2.0 hub can be used to increase the number of USB ports available.	
17-inch or larger color monitor (optional touch-sensitive)	
Pointing device (two-button mouse or trackball; optional for touch-sensitive screens)	
OPTIONAL CONSOLE COMPONENTS	
101-key keyboard	
Headset interface (up to three USB Enhanced or Basic jackboxes)	
Two external speakers; 4 W amplified, 3" minimum	
Desktop or gooseneck microphone or headset	
Dual-pedal footswitch	
TONE RADIO GATEWAY SPECIFICATIONS	
Rx Impedance	600 ohm
Receive Input Level	-40 dBm to 0 dBm
Transmit Impedance	600 ohm
Transmit Output Level	-40 dBm to 0 dBm
Guard Tones Supported	2175Hz (Default), 2100Hz, 2300Hz and 2325Hz
Function Tones Supported	550Hz - 2050Hz in 100Hz increments, qty 16
Tone Tolerance	± 2%
Opto-Input	Qty 1, for High Speed Mute, COR detect, Cd/Clr Rx Status (selectable)
Opto-Input Rating	5-20mA input current, unbalanced, 5K Ohm impedance
Relay Output	Qty 1, follows PTT command to radio
Relay Output Type	Form C, Dry Closure, 150mA max., or 60VDC max.
Relay Output Switching Power	3 Watts max., non-inductive load
Radio Connector Type	RJ45
DIGITAL RADIO GATEWAY SPECIFICATIONS	
MIP Digital when interfacing with a Digital Junction Box (DJB)	
Receive & Transmit Impedance	600 ohm
Receive & Transmit Levels	-40 dBm to 0 dBm
MIP Digital when interfacing directly to radio speaker and mic.	
Receive Impedance	47 Kohm
Transmit Impedance	130 ohm
Receive Input level	50 - 250 mVrms
Transmit Output Level	50 - 250 mVrms
Radio Data Interface	RS485
Max Cable Length to Radio	50 ft
USB JACKBOX DESK MIC INTERFACE	
Impedance	2.2 Kohm
Input Level	max 50 mVrms, nominal level at 5 mVrms

DATA SHEET

MIP 5000
VoIP Radio Console

USB JACKBOX HEADSET INTERFACE	
Receive Impedance	50 ohm
Receive Level	max 150 mVrms, nominal level at 20 mVrms
Transmit Impedance	120 ohm
Transmit Level	max 100 mVrms, nominal level at 55 mVrms
USB JACKBOX	
Call Director Output	-40 to -5 dBm, with a nominal -20 dBm, balanced 600 ohm input
Call Director Input	-40 to -5 dBm, with a nominal -10 dBm, balanced 600 ohm input
Recorder Port	Fixed nominal output is -10 dBm into 600 ohms
Paging Input	Adjustable from -40 to 0 dBm, balanced 600-ohm input
STATUS OUTPUTS AND INPUTS - USB JACKBOX	
Auxiliary Output Type (PTT, DTMF/STAT-ALERT, Recorder)	Form A dry closures, 150 mA max. or 60VDC max.
Auxiliary Output Switching Power (PTT, DTMF/STAT-ALERT, Recorder)	3 watts max. Maximum distance 200 ft within one building
Auxiliary Input Type (Paging Encoder)	Opto-coupled, 5 to 20 mA input current, unbalanced Active: Ground. Maximum distance 200 ft within one building.
LOCAL RADIO GATEWAY	
Receive Impedance	47 Kohm
Receive Input Level	50 - 250 mVrms
Transmit Impedance	130 ohm
Transmit Output level	50 - 250 mVrms
Opto-Input	Qty 1, for High Speed Mute or COR detect (selectable)
Opto-Input Rating	5-20mA input current, unbalanced, 5K Ohm impedance
Relay Output	Qty 7, for PTT, Monitor, Takeover, Binary Freq. Select, PL Select, Wildcard, (Selectable)
Relay Output Type	Form C, Dry Closure, 150mA max., or 60VDC max.
Relay Output Switching Power	3 Watts max., non-inductive load
Radio Connector Type	DB25
NETWORK REQUIREMENTS	
Type	Multicast and layer 3 QoS enabled, 10/100 Mbps Ethernet
Bandwidth	100kbps per audio stream
Packet Loss	1% maximum
End-To-End Delay (latency)	150ms maximum
Jitter	2 mSec maximum
CERTIFICATIONS AND COMPLIANCE	
Radio Gateway (applies to all gateways)	FCC Part 15, Class A; FCC Part 68/TIA968-A; Industry Canada CS03; Industry Canada ICES-003; UL and CSA listed PSU; CE; WEEE; CB
Headset Jackbox	FCC Part 15, Class A; CE; Industry Canada ICES-003; UL and CSA; WEEE; CB

Petro Communications

2425 E HWY 80
Midland, TX 79706
4326634766
4326673613

mmitchell@t3wireless.com



MOTOROLA
Authorized Dealer & Service Center

MOTOROLA and the Stylized M Logo are registered in the U.S. Patent and Trademark Office. All other product or service names are the property of their registered owners. © Motorola, Inc. 2009 (0903)
R3-13-2011B

There was no financial information or monthly reports regarding Winkler County Memorial Hospital for the Court to consider at this time.

There were no line item transfer(s) or salary schedule change(s) regarding Winkler County Memorial Hospital for the Court to consider at this time.

Agenda item regarding request of Sheriff to hire jailer for Winkler County Law Enforcement Center to fill vacancy was not needed at this time.

A motion was made by Commissioner Neal and seconded by Commissioner Thompson to approve request of Shawna Doran on behalf of Westex Credit Union to use Recreation Center at County Park in Kermit for annual meeting and banquet on Saturday, February 23, 2013; which motion became an order of the Court upon the following vote:

Ayes: Commissioners Stevens, Wolf, Neal and Thompson
Noes: None

A motion was made by Commissioner Neal and seconded by Commissioner Stevens to approve request of Stephanie Lara to use Recreation Center at County Park in Kermit for birthday party on Saturday, March 09, 2013; which motion became an order of the Court upon the following vote:

Ayes: Commissioners Stevens, Wolf, Neal and Thompson
Noes: None

A motion was made by Commissioner Neal and seconded by Commissioner Thompson to approve request of JoAnna Muniz to use Recreation Center at County Park in Kermit for birthday party on Saturday, January 19, 2013; which motion became an order of the Court upon the following vote:

Ayes: Commissioners Stevens, Wolf, Neal and Thompson
Noes: None

A motion was made by Commissioner Neal and seconded by Commissioner Thompson to receive Monthly Report of Investment Officer; which motion became an order of the Court upon the following vote:

Ayes: Commissioners Stevens, Wolf, Neal and Thompson
Noes: None

A		B	C	D	E	F	G	H	I	J	K	L
1												
2												
3												
4	RECEIPTS & EXPENDITURES			INCLUDES RECEIPTS AND EXPENDITURES OF WINKLER COUNTY'S GENERAL FUND AND EMPLOYEE HEALTH BENEFIT FUND								
5	BEGINNING BALANCE NOVEMBER 1, 2012	GENERAL FUND - WEST TEXAS STATE			MEMORIAL HOSPITAL - WEST TEXAS STATE	NOVEMBER 1 THRU NOVEMBER 30, 2012		WINKLER COUNTY EMPLOYEE HEALTH BENEFIT FUND				
6	AMOUNT RECEIVED SINCE LAST REPORT	\$726,470.58			\$443,998.91			11/1/2012	DEPOSITS	PAID MEDICAL	PAID MEDICAL	11/30/2012
7	VD CKS	\$1,067,324.72			\$657,625.75			10,853.22	\$264,968.42	\$1,193.80	\$81,836.96	192,791.68
8												
9	MASTERCARD CHARGE				(\$2,185.70)							
10	RETURNED CHECKS											
11	AMOUNT PAID OUT SINCE LAST REPORT											
12	WIRE TRANSFERS											
13	JURY CKS		\$86,546.88									
14	CSOD PAYROLL TRANSFER		\$0.00									
15	TRANSFER FICA		\$189,689.14									
16	ACCOUNTS PAYABLE		\$853,276.42									
17	PAYROLL		\$317,106.27			\$574,067.05						
18	AMOUNT TO BALANCE		\$366,830.13			\$227,918.88		11/1/2012	AD VALOREM TAXES	INTEREST	DISBURSED	11/30/2012
19	BALANCE	\$1,793,795.30	\$1,793,795.30		\$1,099,438.96	\$297,459.02		166,675.40	\$3,642.80	\$	\$	198,313.20
20												
21	REPORT OF INVESTMENTS											
22						MARKET VALUE WILL BE QUOTED USING THE WALT STREET JOURNAL DATED 11/30/2012						
23						BOOK VALUE	ENDING BOOK VALUE	BEGINNING QUOTED FAIRMARKET VALUE	ENDING QUOTED FAIRMARKET VALUE	CHANGE IN MARKET/BOOK VALUE	ACCUMULATED INTEREST FOR PERIOD 11/01 THRU 11/30	INTEREST RECEIVED FOR PERIOD 11/01 THRU 11/30
24	FEDERAL RESERVE - BILL ACCOUNTS					11/1/2012	11/30/2012	11/1/2012	11/30/2012			
25												
26	26 WEEK T-BILL CUSIP #9127956182	0.137%	01/17/13	\$300,000.00	\$299,785.25	\$299,910.00	\$299,943.75	\$299,678.40	\$299,978.00	\$34.65	\$35.00	
27	26 WEEK T-BILL CUSIP #9127956170	0.142%	01/24/13	\$300,000.00	\$299,787.67	\$299,900.83	\$299,935.83	\$299,800.80	\$299,973.60	\$40.17	\$36.25	
28	26 WEEK T-BILL CUSIP #9127956170	0.147%	01/31/13	\$300,000.00	\$299,780.08	\$299,888.63	\$299,925.08	\$299,978.40	\$299,978.40	\$48.82	\$36.25	
29	26 WEEK T-BILL CUSIP #9127956184	0.137%	02/07/13	\$300,000.00	\$299,795.25	\$299,888.63	\$299,964.30	\$299,964.30	\$299,964.30	\$75.67	\$34.88	
30	26 WEEK T-BILL CUSIP #9127956184	0.137%	03/07/13	\$300,000.00	\$299,802.83	\$299,854.57	\$299,945.44	\$299,968.85	\$299,919.60	\$21.41	\$16.87	
31	26 WEEK T-BILL CUSIP #9127956179	0.132%	03/14/13	\$300,000.00	\$299,801.42	\$299,923.63	\$299,923.63	\$299,923.63	\$299,923.63	\$32.27	\$32.50	
32	26 WEEK T-BILL CUSIP #9127956177	0.132%	03/21/13	\$300,000.00	\$299,801.42	\$299,923.63	\$299,923.63	\$299,923.63	\$299,923.63	\$32.27	\$32.50	
33	26 WEEK T-BILL CUSIP #9127956177	0.142%	03/28/13	\$300,000.00	\$299,801.42	\$299,923.63	\$299,923.63	\$299,923.63	\$299,923.63	\$32.27	\$32.50	
34	26 WEEK T-BILL CUSIP #9127956177	0.137%	04/04/13	\$300,000.00	\$299,801.42	\$299,923.63	\$299,923.63	\$299,923.63	\$299,923.63	\$32.27	\$32.50	
35	26 WEEK T-BILL CUSIP #9127956177	0.147%	04/11/13	\$300,000.00	\$299,801.42	\$299,923.63	\$299,923.63	\$299,923.63	\$299,923.63	\$32.27	\$32.50	
36												
37	BALANCE-RESERVE			\$2,250,000.00	\$2,248,430.26	\$2,249,014.63	\$2,249,239.53	\$2,249,591.85	\$2,249,582.25	\$142.72	\$259.88	\$212.33
38	TEXPOOL											
39	GENERAL FUND	0.13%										
40	HOSPITAL	0.13%										
41	BALANCE-TEXPOOL											
42	TEXPOOL'S PORTFOLIO ASSET SUMMARY											
43												
44												
45												
46												
47												
48												
49												
50												
51												
52												
53												
54												
55												
56												
57												
58												
59												
60												
61												
62												
63												
64												
65												
66												
67												
68												
69												
70												
71												
72												
73												
74												
75												
76												
77												
78												
79												
80												
81												
82												
83												
84												
85												
86												
87												
88												
89												
90												
91												
92												
93												
94												
95												
96												
97												
98												
99												
100												

A		B	C	D	E	F	G	H	I	J	K	L
44	CERTIFICATES OF DEPOSIT											
45	SOUTHWEST BANK-WINK	0.30%	2/7/2013	\$99,999.00		\$99,999.00	\$99,999.00	\$100,554.99	\$100,555.99	\$556.99	\$32.06	\$33.12
46	COMMERCIAL STATE OF ANDREWS	0.80%	1/16/2013	\$100,000.00		\$100,000.00	\$100,000.00	\$100,055.99	\$100,056.99	\$56.99	\$61.64	\$63.70
47	PECOS STATE BANK	0.60%	7/13/2013	\$250,000.00		\$250,000.00	\$250,000.00	\$250,642.50	\$250,642.50	\$642.50	\$123.29	\$127.39
48	SECURITY STATE BANK OF MONAHANS	0.47%	3/27/2013	\$150,000.00		\$150,000.00	\$150,000.00	\$150,109.00	\$150,110.50	\$110.50	\$67.96	\$69.87
49	WEST TEXAS STATE BANK OF KERMIT	0.725%	3/27/2013	\$2,000,000.00		\$2,000,000.00	\$2,000,000.00	\$2,002,620.00	\$2,002,620.00	\$2,620.00	\$1,191.78	\$1,231.61
50	COMMERCIAL STATE OF ANDREWS	0.50%	3/27/2013	\$150,000.00		\$150,000.00	\$150,000.00	\$150,069.00	\$150,070.50	\$70.50	\$56.75	\$58.75
51	TRANSPECOS BANKS OF PECOS	0.38%	3/27/2013	\$150,000.00		\$150,000.00	\$150,000.00	\$150,759.00	\$150,760.50	\$760.50	\$38.22	\$39.95
52	TRANSPECOS BANKS OF PECOS	0.48%	3/31/2013	\$100,000.00		\$100,000.00	\$100,000.00	\$100,557.00	\$100,557.00	\$557.00	\$26.65	\$28.48
53	WEST TEXAS NATIONAL BANK OF KERMIT	0.45%	3/27/2013	\$150,000.00		\$150,000.00	\$150,000.00	\$150,609.00	\$150,610.50	\$610.50	\$35.33	\$36.89
54	WEST TEXAS NATIONAL BANK OF KERMIT	0.35%	7/27/2013	\$1,000,000.00		\$1,000,000.00	\$1,000,000.00	\$1,003,076.00	\$1,003,076.00	\$3,076.00	\$492.05	\$506.89
55	WEST TEXAS STATE BANK OF KERMIT	0.65%	7/13/2013	\$1,000,000.00		\$1,000,000.00	\$1,000,000.00	\$1,002,076.00	\$1,002,076.00	\$2,076.00	\$467.12	\$487.12
56	WEST TEXAS STATE BANK OF KERMIT			\$5,249,999.00		\$5,249,999.00	\$5,249,999.00	\$5,261,551.48	\$5,261,551.48	\$11,552.48	\$2,696.74	\$2,672.47
57	BALANCE C/D'S											
58	CASH IN BANK-KERMIT STATE BANK	0.000%				\$1,170,469.49	\$664,289.15	\$1,170,469.49	\$664,289.15		\$0.00	\$0.00
59	TOTAL CASH IN BANK					\$1,170,469.49	\$664,289.15	\$1,170,469.49	\$664,289.15		\$0.00	\$0.00
60												
61	November 30, 2012											
62	TOTAL ASSETS, CASH IN BANK, TEX-POL, FEDERAL RESERVE, INVESTMENTS											
63												
64												
65												
66												
67												
68												
69												
70												
71												
72												
73												
74	THE STATE OF TEXAS, COUNTY OF WINKLER: Before me, the undersigned authority, on this day personally appeared, Jeanna Wilhelm, Winkler County Investment Officer, who being by me duly sworn, upon oath, says that the within											
75	and foregoing report is true, correct and prepared in compliance with generally accepted accounting principles.											
76	Sworn and subscribed before me, this the 14th of January, 2013.											
77												
78												

Jeanna Wilhelm
Winkler County Investment Officer
Clerk,
County Court, Winkler County, Texas

Shethalia Reed

NOVEMBER BANK TRANSACTIONS								
DATE		PAYROLL	ACCOUNTS	JURY	INTEREST	WIRE		
DEPOSIT	NUMBER		PAYABLE		DEPOSITS	TRANSFERS	DEPOSITS	BALANCE
11/2/2012						\$ (61,502.53)		\$ 664,968.05
11/6/2012	71597-71600		\$ 1,303.08			\$ (213.23)		\$ 663,451.74
11/2/2012	71586-71596		\$ 10,994.68					\$ 652,457.06
11/2/2012	86751-86807	\$ 97,373.81						\$ 555,083.25
11/12/2012						\$ (226.88)		\$ 554,856.37
11/9/2012	71716-71717		\$ 335.00					\$ 554,521.37
11/12/2012								\$ 554,521.37
11/1/2012							\$ 467.12	\$ 554,988.49
11/6/2012	44545-44565						\$ 41,352.37	\$ 596,340.86
11/6/2012						\$ (70.00)	\$ 200.00	\$ 596,470.86
11/9/2012	86808-86830	\$ 3,694.62						\$ 592,776.24
11/12/2012	71601-71718		\$ 258,234.45					\$ 334,541.79
11/12/2012						\$ (66,000.00)		\$ 268,541.79
10/16/2012	71720-71728		\$ 6,783.93			\$ (66,587.20)		\$ 195,170.66
11/15/2012		\$ 111,852.75				\$ (213.23)		\$ 83,104.68
11/14/2012	71719		\$ 680.00					\$ 82,424.68
11/15/2012	71729-71733		\$ 4,428.17					\$ 77,996.51
11/15/2012	71667-VD		\$ (10.00)					\$ 78,006.51
11/9/2012							\$ 94,967.66	\$ 172,974.17
11/9/2012							\$ 93,781.61	\$ 266,755.78
11/9/2012							\$ 467.12	\$ 267,222.90
11/13/2012	44584						\$ 1,742.40	\$ 268,965.30
11/13/2012	44583						\$ 741.25	\$ 269,706.55
11/14/2012	44567-44581						\$ 13,883.59	\$ 283,590.14
11/15/2012							\$ 4,220.00	\$ 287,810.14
11/16/2012	44582-44607						\$ 221,218.13	\$ 509,028.27
11/16/2012						\$ (36.46)		\$ 508,991.81
11/20/2012	71740-71742		\$ 32,977.08					\$ 476,014.73
11/20/2012	71743		\$ 550.00					\$ 475,464.73
11/20/2012	71744		\$ 134.53					\$ 475,330.20
11/16/2012	71734-71739		\$ 5,598.95					\$ 469,731.25
11/26/2012	71745-71827		\$ 123,045.27					\$ 346,685.98
11/21/2012	71828-71830		\$ 750.00			\$ (250.00)		\$ 345,685.98
11/23/2012	44609-44616						\$ 132,340.99	\$ 478,026.97
11/23/2012							\$ 1,231.51	\$ 479,258.48
11/27/2012	44619-44625						\$ 108,714.16	\$ 587,972.64
11/28/2012							\$ 1,351.00	\$ 589,323.64
11/28/2012							\$ 96,209.00	\$ 685,532.64
11/28/2012							\$ 11,819.00	\$ 697,351.64
11/28/2012							\$ 5,573.00	\$ 702,924.64
11/28/2012							\$ 3,846.51	\$ 706,771.15
11/29/2012		\$ 1,200.39						\$ 705,570.76
11/29/2012	71831-71836		\$ 24,706.94					\$ 680,863.82
11/29/2012							\$ 3,090.53	\$ 683,954.35
11/30/2012						\$ (61,269.72)		\$ 622,684.63
11/30/2012	71837-71843		\$ 7,139.21			\$ (213.23)		\$ 615,332.19
11/30/2012	86889-86944	\$ 102,984.70						\$ 512,347.49
11/30/2012			\$ 259,055.59					\$ 253,291.90
11/30/2012			\$ 118,155.18					\$ 135,136.72
11/30/2012	44646						\$ 137,241.82	\$ 272,378.54
11/30/2012	44628-44645						\$ 89,896.38	\$ 362,274.92
11/30/2012	44653						\$ 2,517.52	\$ 364,792.44
11/30/2012	44654						\$ 452.05	\$ 365,244.49
11/30/2012	71756-vd		\$ (1,585.64)					\$ 366,830.13
daf,defth;sof	44542-44544							
		\$ 317,106.27	\$ 853,276.42	\$ -	\$ -	\$ (195,079.95)	\$ 1,067,324.72	

Winkler County Treasurer
THE SOFTWARE GROUP, INC.

PAYROLL / PERSONNEL SYSTEM
CHECK REGISTER

03:59:45pm 02 Dec 2012
PAGE 1

CHECK.....	Check Date	PAYROLL DATE	Issued to.....	NET PAY..	DD	STATUS.
86751-PR	11/02/12	11/02/12	TREADWELL, RENEE SUZANNE	888.43		
86752-PR	11/02/12	11/02/12	LARA, RAUL M.	769.41		
86753-PR	11/02/12	11/02/12	VELASQUEZ, PEDRO CARRASCO	874.67		
86754-PR	11/02/12	11/02/12	WOLFE, PATRICIA L.	267.16		
86755-PR	11/02/12	11/02/12	SUZMAN, ELIAS MICHAEL	183.98	N	
86756-PR	11/02/12	11/02/12	OXEDINE, KAYSIE JAYE	193.84	N	
86757-PR	11/02/12	11/02/12	PAUDA, AUSTIN MARCELINO	172.75	N	
86758-PR	11/02/12	11/02/12	WOLF, KELSEY JENAE	265.83	N	
86759-PR	11/02/12	11/02/12	COOPER, CHARLES E.	297.35		
86760-PR	11/02/12	11/02/12	ROBERTS, WALTER MARIE JR.	853.94	N	
86761-PR	11/02/12	11/02/12	WHITE, JULIE MARINA	180.34		
86762-PR	11/02/12	11/02/12	BUSTAMANTE, REYES PALLANES JR.	794.08		
86763-PR	11/02/12	11/02/12	O'CONNOR, STEPHEN M.	819.54		
86764-PR	11/02/12	11/02/12	WOLF, GERRY L.	837.97	N	
86765-PR	11/02/12	11/02/12	GORDON, LUCAS CARL	82.49	N	
86766-PR	11/02/12	11/02/12	DENNIS, SHELA ANN	68.40		
86767-PR	11/02/12	11/02/12	BURROLA, CRISTAL T	373.22	N	
86768-PR	11/02/12	11/02/12	ALARCON, SYLVESTER	105.83		
86769-PR	11/02/12	11/02/12	DUNN, DOUGLAS STEVAN	430.98		
86770-PR	11/02/12	11/02/12	HOLLEY, TOBY W	69.88		
86771-PR	11/02/12	11/02/12	PARKER, ROSA M	313.81	N	
86772-PR	11/02/12	11/02/12	MUNCY, MARTIN B	0.00		
86773-PR	11/02/12	11/02/12	HAWKINS, ROBBIE L.	671.77		
86774-PR	11/02/12	11/02/12	TERRY, MARK C	1,231.31	N	
86775-PR	11/02/12	11/02/12	THOMPSON, BILLY RAY	1,201.58	N	
86776-PR	11/02/12	11/02/12	KAPKA, DON E	796.47		
86777-PR	11/02/12	11/02/12	MITCHELL, GENE E	732.04	N	
86778-PR	11/02/12	11/02/12	MITCHELL, HENRY LEON	799.63		
86779-PR	11/02/12	11/02/12	GARCIA, PEDRO F.	494.60		
86780-PR	11/02/12	11/02/12	HENDERSON, JOHN E.	834.54	N	
86781-PR	11/02/12	11/02/12	WHITE, ROBERT L. SR.	866.06		
86782-PR	11/02/12	11/02/12	GREENE, PAM S.	638.56		
86783-PR	11/02/12	11/02/12	REED, SHETHLIA I.	1,389.28	N	
86784-PR	11/02/12	11/02/12	WARBOIS, DEBRA A	813.79		
86785-PR	11/02/12	11/02/12	ALEXANDER, LADONNA L	1,127.88	N	
86786-PR	11/02/12	11/02/12	ARMENDARIZ, LERIDA	701.23		
86787-PR	11/02/12	11/02/12	CARTWRIGHT, CHRISTINE M	921.80	N	
86788-PR	11/02/12	11/02/12	CROW, RICHARD LEROY	1,115.58	Y	
86789-PR	11/02/12	11/02/12	DOBSON, KIM	572.48	N	
86790-PR	11/02/12	11/02/12	GALLEGOS, SUKI A.	797.18		
86791-PR	11/02/12	11/02/12	GLOVER, ANTHONY DESHAWN	992.32	N	
86792-PR	11/02/12	11/02/12	HATTAWAY, ELENA BERDOZA	158.49		
86793-PR	11/02/12	11/02/12	JOHNSON, DYSTINEY LYNN	892.45	N	
86794-PR	11/02/12	11/02/12	KEELY, DARLA J	317.91	N	
86795-PR	11/02/12	11/02/12	KEELY, GEORGE J. JR.	1,802.65	N	
86796-PR	11/02/12	11/02/12	LONG, ROY L.	1,072.34		
86797-PR	11/02/12	11/02/12	MARTINEZ, JOHNNY ANGEL	849.15	N	

Winkler County Treasurer
THE SOFTWARE GROUP, INC.

PAYROLL / PERSONNEL SYSTEM
CHECK REGISTER

03:59:45pm 02 Dec 2011
PAGE 2

CHECK.....	Check Date	PAYROLL DATE	Issued to.....	NET PAY..	DD	STATUS.
86798-PR	11/02/12	11/02/12	MONTEZ, JIM	974.93	N	
86799-PR	11/02/12	11/02/12	ROBERTS, BONNIE MAY	870.28	N	
86800-PR	11/02/12	11/02/12	SOLTERO, JOSE L.	1,227.99		
86801-PR	11/02/12	11/02/12	SOTELO, KIMBERLY LUANN	982.47	N	
86802-PR	11/02/12	11/02/12	TRIBBLE, BILL DAVID	1,024.54		
86803-PR	11/02/12	11/02/12	UNDERWOOD, WILLIAM F	787.80		
86804-PR	11/02/12	11/02/12	EASLEY, ROBIN RENE'	458.50	N	
86805-PR	11/02/12	11/02/12	JACKSON, PHYLLIS L.	1,035.32		
86806-PR	11/02/12	11/02/12	RANDOLPH, DIXIE K.	893.37		
86807-PR	11/02/12	11/02/12	TERRY, SHERRY A.	1,411.46	N	
				40,293.73		
86808-PR	11/12/12	11/12/12	ARMENDARIZ, LERIDA	123.25		
86809-PR	11/12/12	11/12/12	BRYANT, WILLIE BEE	138.25	N	
86810-PR	11/12/12	11/12/12	CAPPS, ADELA R	110.50		
86811-PR	11/12/12	11/12/12	CARMAN, RITA D.	119.00	N	
86812-PR	11/12/12	11/12/12	CHANCE, SHARON K	142.50		
86813-PR	11/12/12	11/12/12	CLAY, JOAN NIXON	110.50		
86814-PR	11/12/12	11/12/12	CUBINE, MARY KAY	42.50	N	
86815-PR	11/12/12	11/12/12	FLYNN, ELIDIA G	119.00		
86816-PR	11/12/12	11/12/12	GARCIA, OFELIA MARTINEZ	110.50	N	
86817-PR	11/12/12	11/12/12	GLANDER, JOYCE M	821.69	N	
86818-PR	11/12/12	11/12/12	GRAY, MARGARET L	34.00	N	
86819-PR	11/12/12	11/12/12	HAYES, DONNA PIPKIN	127.50	N	
86820-PR	11/12/12	11/12/12	KEMP, GRACE	110.50	N	
86821-PR	11/12/12	11/12/12	LEMMON, SUETTA S	42.50		
86822-PR	11/12/12	11/12/12	LONG, RENAH D	119.00	N	
86823-PR	11/12/12	11/12/12	LUJAN, TAMMIE L.	134.00	N	
86824-PR	11/12/12	11/12/12	MARES, ESTELLA V	119.00		
86825-PR	11/12/12	11/12/12	MITCHELL, DEVORA WINN	34.00		
86826-PR	11/12/12	11/12/12	ORTIZ, CARMELA G	114.75		
86827-PR	11/12/12	11/12/12	ORTIZ, LOUISE GUJARDO	802.68		
86828-PR	11/12/12	11/12/12	REED, JACKIE W.	42.50		
86829-PR	11/12/12	11/12/12	SABONYA, BARBARA	34.00		
86830-PR	11/12/12	11/12/12	TURNER, LESTER DON	142.50		
				3,694.62		
86831-PR	11/16/12	11/16/12	TREADWELL, RENEE SUZANNE	1,198.89		
86832-PR	11/16/12	11/16/12	LARA, RAUL M.	900.36		
86833-PR	11/16/12	11/16/12	VELASQUEZ, PEDRO CARRASCO	1,095.73		
86834-PR	11/16/12	11/16/12	WOLFE, PATRICIA L.	267.16		
86835-PR	11/16/12	11/16/12	GUZMAN, ELIAS MICHAEL	146.24	N	
86836-PR	11/16/12	11/16/12	OXEDINE, KAYSIE JAYE	139.01	N	
86837-PR	11/16/12	11/16/12	PAUDA, AUSTIN MARCELINO	122.14	N	
86838-PR	11/16/12	11/16/12	WOLF, KELSEY JENAE	259.97	N	

Winkler County Treasurer
THE SOFTWARE GROUP, INC.

PAYROLL / PERSONNEL SYSTEM
CHECK REGISTER

03:59:45pm 02 Dec 201
PAGE 3

CHECK.....	Check Date	PAYROLL DATE	Issued to.....	NET PAY..	DD	STATUS.
86839-PR	11/16/12	11/16/12	COOPER, CHARLES E.	297.35		
86840-PR	11/16/12	11/16/12	ROBERTS, WALTER MARIE JR.	1,388.16	N	
86841-PR	11/16/12	11/16/12	WHITE, JULIE MARINA	178.23		
86842-PR	11/16/12	11/16/12	BUSTAMANTE, REYES PALLANES JR.	940.88		
86843-PR	11/16/12	11/16/12	D'CONNOR, STEPHEN M.	1,054.42		
86844-PR	11/16/12	11/16/12	WOLF, GERRY L.	1,187.53	N	
86845-PR	11/16/12	11/16/12	GORDON, LUCAS CARL	37.74	N	
86846-PR	11/16/12	11/16/12	BURROLA, CRISTAL T	226.36	N	
86847-PR	11/16/12	11/16/12	ALARCON, SYLVESTER	105.83		
86848-PR	11/16/12	11/16/12	DUNN, DOUGLAS STEVAN	696.60		
86849-PR	11/16/12	11/16/12	HOLLEY, TOBY W	69.88		
86850-PR	11/16/12	11/16/12	PARKER, ROSA M	704.06	N	
86851-PR	11/16/12	11/16/12	CROW, RICHARD LEROY	30.57	N	
86852-PR	11/16/12	11/16/12	MUNCY, MARTIN B	0.00		
86853-PR	11/16/12	11/16/12	HAWKINS, ROBBIE L.	868.83		
86854-PR	11/16/12	11/16/12	TERRY, MARK C	1,195.99	N	
86855-PR	11/16/12	11/16/12	THOMPSON, BILLY RAY	1,375.99	N	
86856-PR	11/16/12	11/16/12	KAPKA, DON E	869.87		
86857-PR	11/16/12	11/16/12	MITCHELL, GENE E	805.44	N	
86858-PR	11/16/12	11/16/12	MITCHELL, HENRY LEON	917.07		
86859-PR	11/16/12	11/16/12	GARCIA, PEDRO F.	688.84		
86860-PR	11/16/12	11/16/12	HENDERSON, JOHN E.	1,235.30	N	
86861-PR	11/16/12	11/16/12	WHITE, ROBERT L. SR.	1,068.82		
86862-PR	11/16/12	11/16/12	GREENE, PAM S.	997.86		
86863-PR	11/16/12	11/16/12	REED, SMETHELIA I.	1,606.78	N	
86864-PR	11/16/12	11/16/12	WARBOIS, DEBRA A	979.52		
86865-PR	11/16/12	11/16/12	ALEXANDER, LADONNA L	929.85	N	
86866-PR	11/16/12	11/16/12	ARMENDARIZ, LERIDA	751.64		
86867-PR	11/16/12	11/16/12	CARTWRIGHT, CHRISTINE M	993.95	N	
86868-PR	11/16/12	11/16/12	DOBSON, KIM	572.48	N	
86869-PR	11/16/12	11/16/12	GALLEGOS, SUKI A.	985.72		
86870-PR	11/16/12	11/16/12	GLOVER, ANTHONY DESHAWN	1,118.93	N	
86871-PR	11/16/12	11/16/12	HATTAWAY, ELENA BERDOZA	314.39		
86872-PR	11/16/12	11/16/12	JOHNSON, DYSTINEY LYNN	900.89	N	
86873-PR	11/16/12	11/16/12	KEELY, DARLA J	412.96	N	
86874-PR	11/16/12	11/16/12	KEELY, GEORGE J. JR.	1,851.85	N	
86875-PR	11/16/12	11/16/12	LONG, ROY L.	1,211.15		
86876-PR	11/16/12	11/16/12	MARTINEZ, JOHNNY ANGEL	807.49	N	
86877-PR	11/16/12	11/16/12	MONTEZ, JIM	980.05	N	
86878-PR	11/16/12	11/16/12	ROBERTS, BONNIE MAY	1,207.35	N	
86879-PR	11/16/12	11/16/12	SOLTERO, JOSE L.	1,241.42		
86880-PR	11/16/12	11/16/12	SOTELO, KIMBERLY LUANN	997.15	N	
86881-PR	11/16/12	11/16/12	STROUD, LEON EDWARD	679.77	Y	
86882-PR	11/16/12	11/16/12	TRIBBLE, BILL DAVID	1,182.80		
86883-PR	11/16/12	11/16/12	UNDERWOOD, WILLIAM F	1,096.82		
86884-PR	11/16/12	11/16/12	EASLEY, ROBIN RENE'	668.18	N	
86885-PR	11/16/12	11/16/12	JACKSON, PHYLLIS L.	1,166.17		

Winkler County Treasurer
THE SOFTWARE GROUP, INC.

PAYROLL / PERSONNEL SYSTEM
CHECK REGISTER

03:59:45pm 02 Dec 2011
PAGE 4

CHECK.....	Check Date	PAYROLL DATE	Issued to.....	NET PAY..	DD	STATUS.
86886-PR	11/16/12	11/16/12	RANDOLPH, DIXIE K.	1,815.55		
86887-PR	11/16/12	11/16/12	TERRY, SHERRY A.	1,616.98	N	
86888-PR	11/16/12	11/16/12	CROW, RICHARD LEROY	659.02	Y	
				46,931.90		
86889-PR	11/30/12	11/30/12	TREADWELL, RENEE SUZANNE	1,011.70		
86890-PR	11/30/12	11/30/12	LARA, RAUL M.	797.42		
86891-PR	11/30/12	11/30/12	VELASQUEZ, PEDRO CARRASCO	1,033.04		
86892-PR	11/30/12	11/30/12	WOLFE, PATRICIA L.	267.16		
86893-PR	11/30/12	11/30/12	GUZMAN, ELIAS MICHAEL	188.70	N	
86894-PR	11/30/12	11/30/12	OXEDINE, KAYSIE JAYE	164.32	N	
86895-PR	11/30/12	11/30/12	PAUDA, AUSTIN MARCELINO	176.97	N	
86896-PR	11/30/12	11/30/12	WOLF, KELSEY JENAE	265.83	N	
86897-PR	11/30/12	11/30/12	COOPER, CHARLES E.	297.35		
86898-PR	11/30/12	11/30/12	ROBERTS, WALTER MARIE JR.	853.94	N	
86899-PR	11/30/12	11/30/12	WHITE, JULIE MARINA	149.97		
86900-PR	11/30/12	11/30/12	BUSTAMANTE, REYES PALLANES JR.	805.98		
86901-PR	11/30/12	11/30/12	O'CONNOR, STEPHEN M.	932.04		
86902-PR	11/30/12	11/30/12	WOLF, GERRY L.	881.98	N	
86903-PR	11/30/12	11/30/12	DENNIS, SHEILA ANN	34.20		
86904-PR	11/30/12	11/30/12	BURROLA, CRISTAL T	226.36	N	
86905-PR	11/30/12	11/30/12	ALARCON, SYLVESTER	105.83		
86906-PR	11/30/12	11/30/12	DUNN, DOUGLAS STEVAN	432.36		
86907-PR	11/30/12	11/30/12	HOLLEY, TOBY W	69.88		
86908-PR	11/30/12	11/30/12	PARKER, ROSA M	313.81	N	
86909-PR	11/30/12	11/30/12	CROW, RICHARD LEROY	30.57	N	
86910-PR	11/30/12	11/30/12	MUNCY, MARTIN B	0.00		
86911-PR	11/30/12	11/30/12	HAWKINS, ROBBIE L.	797.41		
86912-PR	11/30/12	11/30/12	TERRY, MARK C	1,187.26	N	
86913-PR	11/30/12	11/30/12	THOMPSON, BILLY RAY	1,382.98	N	
86914-PR	11/30/12	11/30/12	KAPKA, DON E	796.47		
86915-PR	11/30/12	11/30/12	MITCHELL, GENE E	732.04	N	
86916-PR	11/30/12	11/30/12	MITCHELL, HENRY LEON	880.97		
86917-PR	11/30/12	11/30/12	GARCIA, PEDRO F.	582.12		
86918-PR	11/30/12	11/30/12	HENDERSON, JOHN E.	884.44	N	
86919-PR	11/30/12	11/30/12	WHITE, ROBERT L. SR.	1,002.14		
86920-PR	11/30/12	11/30/12	GREENE, PAUL S.	753.74		
86921-PR	11/30/12	11/30/12	REED, SHELTELIA I.	1,445.32	N	
86922-PR	11/30/12	11/30/12	WARBOIS, DEBRA A	897.40		
86923-PR	11/30/12	11/30/12	CHAVES, BARBARA B	54.72	N	
86924-PR	11/30/12	11/30/12	ALEXANDER, LADONNA L	954.39	N	
86925-PR	11/30/12	11/30/12	ARMENDARIZ, LERIDA	734.18		
86926-PR	11/30/12	11/30/12	CARTWRIGHT, CHRISTINE M	891.19	N	
86927-PR	11/30/12	11/30/12	DOBSON, KIM	633.64	N	
86928-PR	11/30/12	11/30/12	GALLEGOS, SUKI A.	781.14		
86929-PR	11/30/12	11/30/12	GLOVER, ANTHONY DESHAWN	1,006.54	N	

Winkler County Treasurer
THE SOFTWARE GROUP, INC.

PAYROLL / PERSONNEL SYSTEM
CHECK REGISTER

03:59:45pm 02 Dec 20
PAGE 5

CHECK.....	Check Date	PAYROLL DATE	Issued to.....	NET PAY..	DD	STATUS.
86930-PR	11/30/12	11/30/12	JOHNSON, DYSTINEY LYNN	958.41	N	
86931-PR	11/30/12	11/30/12	KEELY, DARLA J	335.71	N	
86932-PR	11/30/12	11/30/12	KEELY, GEORGE J. JR.	1,843.11	N	
86933-PR	11/30/12	11/30/12	LONG, ROY L.	1,271.83		
86934-PR	11/30/12	11/30/12	MARTINEZ, JOHNNY ANGEL	820.14	N	
86935-PR	11/30/12	11/30/12	MONTEZ, JIM	980.05	N	
86936-PR	11/30/12	11/30/12	ROBERTS, BONNIE MAY	1,035.19	N	
86937-PR	11/30/12	11/30/12	SOLTERO, JOSE L.	1,302.91		
86938-PR	11/30/12	11/30/12	SOTELO, KIMBERLY LUANN	988.41	N	
86939-PR	11/30/12	11/30/12	TRIBBLE, BILL DAVID	1,100.68		
86940-PR	11/30/12	11/30/12	UNDERWOOD, WILLIAM F	962.49		
86941-PR	11/30/12	11/30/12	EASLEY, ROBIN RENE	543.26	N	
86942-PR	11/30/12	11/30/12	JACKSON, PHYLLIS L.	1,041.26		
86943-PR	11/30/12	11/30/12	RANDOLPH, DIXIE K.	914.36		
86944-PR	11/30/12	11/30/12	TERRY, SHERRY A.	1,469.00	N	
				41,010.31		
163751000-PR	11/02/12	11/02/12	ANCHONDO, JOE BRIAN	1,354.90	Y	CLEAR
163751001-PR	11/02/12	11/02/12	ARMENDARIZ, ELVIA G.	242.00	Y	CLEAR
163751002-PR	11/02/12	11/02/12	ARMENDARIZ, JUAN DEDIOS	1,007.31	Y	CLEAR
163751003-PR	11/02/12	11/02/12	ASHABRANNER, JEFFREY COLE	907.08	Y	CLEAR
163751004-PR	11/02/12	11/02/12	BAKER, GENEVA RAQUEL	985.35	Y	CLEAR
163751005-PR	11/02/12	11/02/12	BARRON, BRENDA L.	811.20	Y	CLEAR
163751006-PR	11/02/12	11/02/12	BLAGG, DONNA LINDSAY	516.31	Y	CLEAR
163751007-PR	11/02/12	11/02/12	CARPENTER, J. R.	1,266.23	Y	CLEAR
163751008-PR	11/02/12	11/02/12	CATES, SAMMIE ALTON JR.	848.54	Y	CLEAR
163751009-PR	11/02/12	11/02/12	DUNN, DOUGLAS STEVAN	1,052.30	Y	CLEAR
163751010-PR	11/02/12	11/02/12	EGGER, MONTY ZANE	840.94	Y	CLEAR
163751011-PR	11/02/12	11/02/12	EVEREST, EULONDA	300.32	Y	CLEAR
163751012-PR	11/02/12	11/02/12	EVERETT, JAMES S	2,381.33	Y	CLEAR
163751013-PR	11/02/12	11/02/12	FAMBRD, TIFFANY ELIZABETH	1,882.43	Y	CLEAR
163751014-PR	11/02/12	11/02/12	FLOWERS, RONNIE CLAUDE	824.64	Y	CLEAR
163751015-PR	11/02/12	11/02/12	FRANKS, PATRICIA A.	1,269.02	Y	CLEAR
163751016-PR	11/02/12	11/02/12	GARRETT, CARL MICHAEL	1,016.19	Y	CLEAR
163751017-PR	11/02/12	11/02/12	GUZMAN, DOMINGO JR.	784.37	Y	CLEAR
163751018-PR	11/02/12	11/02/12	HAMMOND, SUSAN MARIE	690.00	Y	CLEAR
163751019-PR	11/02/12	11/02/12	HARTLEY, WANNAH L.	1,298.52	Y	CLEAR
163751020-PR	11/02/12	11/02/12	HEREDIA, BRENNIA TERESA	631.22	Y	CLEAR
163751021-PR	11/02/12	11/02/12	HOLDER, PAULA JEANNE	647.54	Y	CLEAR
163751022-PR	11/02/12	11/02/12	HOLGUIN, DOROTHY A	364.46	Y	CLEAR
163751023-PR	11/02/12	11/02/12	HOLLEY, TOBY W	994.48	Y	CLEAR
163751024-PR	11/02/12	11/02/12	JEROME, ALLEN RAY	827.27	Y	CLEAR
163751025-PR	11/02/12	11/02/12	JOHNSON, CHERYL L.	565.38	Y	CLEAR
163751026-PR	11/02/12	11/02/12	KEMP, TEVIN SCOTT	771.59	Y	CLEAR
163751027-PR	11/02/12	11/02/12	KLINE, KATY P.	410.73	Y	CLEAR
163751028-PR	11/02/12	11/02/12	KYLE, RICHARD LESLIE	718.98	Y	CLEAR

Winkler County Treasurer
THE SOFTWARE GROUP, INC.

PAYROLL / PERSONNEL SYSTEM
CHECK REGISTER

03:59:45pm 02 Dec 2012
PAGE 6

CHECK.....	Check Date	PAYROLL DATE	Issued to.....	NET PAY..	DD	STATUS.
163751029-PR	11/02/12	11/02/12	LALONDE, RODNEY L	797.33	Y	CLEAR
163751030-PR	11/02/12	11/02/12	LALONDE, SHEILA GAILE	685.62	Y	CLEAR
163751031-PR	11/02/12	11/02/12	LEAVITT, JOHN HARVEY	1,100.27	Y	CLEAR
163751032-PR	11/02/12	11/02/12	LECK, BONNIE S.	1,733.14	Y	CLEAR
163751033-PR	11/02/12	11/02/12	LUJAN, AIDA M	257.51	Y	CLEAR
163751034-PR	11/02/12	11/02/12	LUJAN, JO H	873.26	Y	CLEAR
163751035-PR	11/02/12	11/02/12	MITCHELL, JAMES D	1,122.78	Y	CLEAR
163751036-PR	11/02/12	11/02/12	MIXON, GLENDA J.	322.53	Y	CLEAR
163751037-PR	11/02/12	11/02/12	NEAL, RANDY M	1,212.73	Y	CLEAR
163751038-PR	11/02/12	11/02/12	OXEDINE, JULIE ANN	1,415.70	Y	CLEAR
163751039-PR	11/02/12	11/02/12	PARKER, ROSA M.	587.03	Y	CLEAR
163751040-PR	11/02/12	11/02/12	PRICE, DON WOOD	855.41	Y	CLEAR
163751041-PR	11/02/12	11/02/12	REYNOLDS, COLBY TYREL	960.14	Y	CLEAR
163751042-PR	11/02/12	11/02/12	RIVAS, SILVIA Z	615.30	Y	CLEAR
163751043-PR	11/02/12	11/02/12	RODRIGUEZ, LAURIE ANN	667.79	Y	CLEAR
163751044-PR	11/02/12	11/02/12	ROGERS, JERRY NEIL	96.70	Y	CLEAR
163751045-PR	11/02/12	11/02/12	SETTLE, CHASE E.	382.29	Y	CLEAR
163751046-PR	11/02/12	11/02/12	SHEPARD, SANDRA KAY	1,218.22	Y	CLEAR
163751047-PR	11/02/12	11/02/12	SHIPLEY, DANA A	299.04	Y	CLEAR
163751048-PR	11/02/12	11/02/12	SHIPLEY, DANA A	400.47	Y	CLEAR
163751049-PR	11/02/12	11/02/12	SHROPSHIRE, LAURIE BETH	893.22	Y	CLEAR
163751050-PR	11/02/12	11/02/12	SIMPSON, VIDA D.	824.91	Y	CLEAR
163751051-PR	11/02/12	11/02/12	SOLTERO, MINERVA ZAMARRON	837.16	Y	CLEAR
163751052-PR	11/02/12	11/02/12	SPOULDING, BRIAN A	887.89	Y	CLEAR
163751053-PR	11/02/12	11/02/12	STAGGS, TYLER S	84.76	Y	CLEAR
163751054-PR	11/02/12	11/02/12	TALIAFERRO, NORMA ANNE	773.75	Y	CLEAR
163751055-PR	11/02/12	11/02/12	TALIAFERRO, NORMA ANNE	380.89	Y	CLEAR
163751056-PR	11/02/12	11/02/12	TALIAFERRO, NORMA ANNE	232.58	Y	CLEAR
163751057-PR	11/02/12	11/02/12	TALIAFERRO, NORMA ANNE	81.30	Y	CLEAR
163751058-PR	11/02/12	11/02/12	TALIAFERRO, STEPHEN WARREN	2,093.52	Y	CLEAR
163751059-PR	11/02/12	11/02/12	TRAMMELL, SHARON D	658.08	Y	CLEAR
163751060-PR	11/02/12	11/02/12	WILLHELM, RHONDA REJEAN	1,367.08	Y	CLEAR
163751061-PR	11/02/12	11/02/12	WILSON, COY LEE	333.28	Y	CLEAR
163751062-PR	11/02/12	11/02/12	WOLF, BLANE AUSTIN	1,534.83	Y	CLEAR
163751063-PR	11/02/12	11/02/12	WOLF, BRANDY J.	1,392.49	Y	CLEAR
163751064-PR	11/02/12	11/02/12	WOLF, CHARLES M.	767.70	Y	CLEAR
163751065-PR	11/02/12	11/02/12	WOLF, JAMES ROBERT	1,330.25	Y	CLEAR
163751066-PR	11/02/12	11/02/12	WRIGHT, SHERYL LYNN	784.50	Y	CLEAR
				57,080.08		
163901000-PR	11/16/12	11/16/12	ANCHONDO, JOE BRIAN	1,390.27	Y	CLEAR
163901001-PR	11/16/12	11/16/12	ARMENDARIZ, ELVIA G.	279.56	Y	CLEAR
163901002-PR	11/16/12	11/16/12	ARMENDARIZ, JUAN DEDIOS	1,055.22	Y	CLEAR
163901003-PR	11/16/12	11/16/12	ASHABANNER, JEFFREY COLE	907.08	Y	CLEAR
163901004-PR	11/16/12	11/16/12	BAKER, GENEVA RAQUEL	1,000.55	Y	CLEAR
163901005-PR	11/16/12	11/16/12	BARRON, BRENDA L	1,030.04	Y	CLEAR

Winkler County Treasurer
THE SOFTWARE GROUP, INC.

PAYROLL / PERSONNEL SYSTEM
CHECK REGISTER

03:59:45pm 02 Dec 2012
PAGE 7

CHECK.....	Check Date	PAYROLL DATE	Issued to.....	NET PAY..	DD	STATUS.
163901006-PR	11/16/12	11/16/12	BLAGG, DONNA LINDSAY	543.80	Y	CLEAR
163901007-PR	11/16/12	11/16/12	CARPENTER, J. R.	1,496.44	Y	CLEAR
163901008-PR	11/16/12	11/16/12	CATES, SAMMIE ALTON JR.	965.98	Y	CLEAR
163901009-PR	11/16/12	11/16/12	DUNN, DOUGLAS STEVAN	1,052.30	Y	CLEAR
163901010-PR	11/16/12	11/16/12	EGGER, MONTY ZANE	1,083.00	Y	CLEAR
163901011-PR	11/16/12	11/16/12	EVEREST, EULONDA	373.72	Y	CLEAR
163901012-PR	11/16/12	11/16/12	EVERETT, JAMES S	1,676.64	Y	CLEAR
163901013-PR	11/16/12	11/16/12	FAMRO, TIFFANY ELIZABETH	1,900.22	Y	CLEAR
163901014-PR	11/16/12	11/16/12	FLOWERS, RONNIE CLAUDE	971.44	Y	CLEAR
163901015-PR	11/16/12	11/16/12	FRANKS, PATRICIA A.	1,684.31	Y	CLEAR
163901016-PR	11/16/12	11/16/12	GARRETT, CARL MICHAEL	1,045.07	Y	CLEAR
163901017-PR	11/16/12	11/16/12	GUZMAN, DOMINGO JR.	947.78	Y	CLEAR
163901018-PR	11/16/12	11/16/12	HAMMOND, SUSAN MARIE	864.98	Y	CLEAR
163901019-PR	11/16/12	11/16/12	HARTLEY, WANNAH L	1,443.99	Y	CLEAR
163901020-PR	11/16/12	11/16/12	HEREDIA, BRENNA TERESA	703.62	Y	CLEAR
163901021-PR	11/16/12	11/16/12	HOLDER, PAULA JEANNE	744.59	Y	CLEAR
163901022-PR	11/16/12	11/16/12	HOLGUIN, DOROTHY A	380.91	Y	CLEAR
163901023-PR	11/16/12	11/16/12	HOLLEY, TOBY W	1,134.65	Y	CLEAR
163901024-PR	11/16/12	11/16/12	JEROME, ALLEN RAY	842.88	Y	CLEAR
163901025-PR	11/16/12	11/16/12	JOHNSON, CHERYL L.	689.04	Y	CLEAR
163901026-PR	11/16/12	11/16/12	KEMP, TEVIN SCOTT	809.48	Y	CLEAR
163901027-PR	11/16/12	11/16/12	KLINE, KATY P.	783.71	Y	CLEAR
163901028-PR	11/16/12	11/16/12	KYLE, RICHARD LESLIE	1,094.81	Y	CLEAR
163901029-PR	11/16/12	11/16/12	LALONDE, RODNEY L	881.77	Y	CLEAR
163901030-PR	11/16/12	11/16/12	LALONDE, SHEILA GAILE	932.62	Y	CLEAR
163901031-PR	11/16/12	11/16/12	LEAVITT, JOHN HARVEY	1,170.05	Y	CLEAR
163901032-PR	11/16/12	11/16/12	LECK, BONNIE S.	2,142.61	Y	CLEAR
163901033-PR	11/16/12	11/16/12	LUJAN, AIDA M	279.56	Y	CLEAR
163901034-PR	11/16/12	11/16/12	LUJAN, JO H	1,055.23	Y	CLEAR
163901035-PR	11/16/12	11/16/12	MITCHELL, JAMES D	1,174.39	Y	CLEAR
163901036-PR	11/16/12	11/16/12	MIXON, GLENDA J.	645.51	Y	CLEAR
163901037-PR	11/16/12	11/16/12	NEAL, RANDY M	1,417.43	Y	CLEAR
163901038-PR	11/16/12	11/16/12	OXEDINE, JULIE ANN	1,061.68	Y	CLEAR
163901039-PR	11/16/12	11/16/12	PARKER, ROSA M.	622.11	Y	CLEAR
163901040-PR	11/16/12	11/16/12	PRICE, DON WOOD	1,000.03	Y	CLEAR
163901041-PR	11/16/12	11/16/12	REYNOLDS, COLBY TYREL	1,018.86	Y	CLEAR
163901042-PR	11/16/12	11/16/12	RIVAS, SILVIA Z	768.71	Y	CLEAR
163901043-PR	11/16/12	11/16/12	RODRIGUEZ, LAURIE ANN	686.95	Y	CLEAR
163901044-PR	11/16/12	11/16/12	ROGERS, JERRY NEIL	96.70	Y	CLEAR
163901045-PR	11/16/12	11/16/12	SETTLE, CHASE E.	382.29	Y	CLEAR
163901046-PR	11/16/12	11/16/12	SHEPARD, SANDRA KAY	1,952.83	Y	CLEAR
163901047-PR	11/16/12	11/16/12	SHIPLEY, DANA A	464.06	Y	CLEAR
163901048-PR	11/16/12	11/16/12	SHIPLEY, DANA A	456.39	Y	CLEAR
163901049-PR	11/16/12	11/16/12	SHROPSHIRE, LAURIE BETH	1,176.81	Y	CLEAR
163901050-PR	11/16/12	11/16/12	SIMPSON, VIDA D.	929.27	Y	CLEAR
163901051-PR	11/16/12	11/16/12	SOLTERO, MINERVA ZAMARRON	1,428.66	Y	CLEAR
163901052-PR	11/16/12	11/16/12	SPALDING, BRIAN A	855.97	Y	CLEAR

Winkler County Treasurer
THE SOFTWARE GROUP, INC.

PAYROLL / PERSONNEL SYSTEM
CHECK REGISTER

03:59:45pm 02 Dec 20
PAGE 8

CHECK.....	Check Date	PAYROLL DATE	Issued to.....	NET PAY..	DD	STATUS.
163901053-PR	11/16/12	11/16/12	STAGGS, TYLER S	95.69	Y	CLEAR
163901054-PR	11/16/12	11/16/12	TALIAFERRO, NORMA ANNE	817.79	Y	CLEAR
163901055-PR	11/16/12	11/16/12	TALIAFERRO, NORMA ANNE	388.09	Y	CLEAR
163901056-PR	11/16/12	11/16/12	TALIAFERRO, NORMA ANNE	232.58	Y	CLEAR
163901057-PR	11/16/12	11/16/12	TALIAFERRO, NORMA ANNE	81.30	Y	CLEAR
163901058-PR	11/16/12	11/16/12	TALIAFERRO, STEPHEN WARREN	2,310.75	Y	CLEAR
163901059-PR	11/16/12	11/16/12	TRAMMELL, SHARON D	1,002.28	Y	CLEAR
163901060-PR	11/16/12	11/16/12	WILLHELM, RHONDA REJEAN	1,562.72	Y	CLEAR
163901061-PR	11/16/12	11/16/12	WILSON, COY LEE	378.82	Y	CLEAR
163901062-PR	11/16/12	11/16/12	WOLF, BLANE AUSTIN	1,500.59	Y	CLEAR
163901063-PR	11/16/12	11/16/12	WOLF, BRANDY J.	1,887.07	Y	CLEAR
163901064-PR	11/16/12	11/16/12	WOLF, CHARLES M.	800.38	Y	CLEAR
163901065-PR	11/16/12	11/16/12	WOLF, JAMES ROBERT	1,535.21	Y	CLEAR
163901066-PR	11/16/12	11/16/12	WRIGHT, SHERYL LYNN	830.93	Y	CLEAR
				64,920.77		
163961000-PR	11/29/12	11/29/12	HOLLEY, TOBY W	396.13	Y	CLEAR
163961001-PR	11/29/12	11/29/12	PARKER, ROSA M.	408.13	Y	CLEAR
163961002-PR	11/29/12	11/29/12	SHIPLEY, DANA A	396.13	Y	CLEAR
				1,200.39		
164031000-PR	11/30/12	11/30/12	ANCHONDO, JOE BRIAN	866.03	Y	CLEAR
164031001-PR	11/30/12	11/30/12	ARMENDARIZ, ELVIA G.	279.56	Y	CLEAR
164031002-PR	11/30/12	11/30/12	ARMENDARIZ, JUAN DEDIOS	1,151.05	Y	CLEAR
164031003-PR	11/30/12	11/30/12	ASHABRANNER, JEFFREY COLE	988.41	Y	CLEAR
164031004-PR	11/30/12	11/30/12	BAKER, GENEVA RAQUEL	1,051.40	Y	CLEAR
164031005-PR	11/30/12	11/30/12	BARRON, BRENDA L	830.47	Y	CLEAR
164031006-PR	11/30/12	11/30/12	BLAGG, DONNA LINDSAY	551.30	Y	CLEAR
164031007-PR	11/30/12	11/30/12	CARPENTER, J. R.	1,457.98	Y	CLEAR
164031008-PR	11/30/12	11/30/12	CATES, SAMMIE ALTON JR.	917.97	Y	CLEAR
164031009-PR	11/30/12	11/30/12	CROW, RICHARD LEROY	309.61	Y	CLEAR
164031010-PR	11/30/12	11/30/12	DUNN, DOUGLAS STEVAN	1,052.30	Y	CLEAR
164031011-PR	11/30/12	11/30/12	EGGER, MONTY ZANE	865.06	Y	CLEAR
164031012-PR	11/30/12	11/30/12	EVEREST, EULONDA	381.65	Y	CLEAR
164031013-PR	11/30/12	11/30/12	EVERETT, JAMES S	2,491.27	Y	CLEAR
164031014-PR	11/30/12	11/30/12	FAMBRO, TIFFANY ELIZABETH	1,281.20	Y	CLEAR
164031015-PR	11/30/12	11/30/12	FLOWERS, RONNIE CLAUDE	824.64	Y	CLEAR
164031016-PR	11/30/12	11/30/12	FRANKS, PATRICIA A.	1,363.81	Y	CLEAR
164031017-PR	11/30/12	11/30/12	GARRETT, CARL MICHAEL	1,150.20	Y	CLEAR
164031018-PR	11/30/12	11/30/12	GUZMAN, DOMINGO JR.	850.98	Y	CLEAR
164031019-PR	11/30/12	11/30/12	HAMMOND, SUSAN MARIE	773.52	Y	CLEAR
164031020-PR	11/30/12	11/30/12	HARTLEY, WANNAH L	1,385.27	Y	CLEAR
164031021-PR	11/30/12	11/30/12	HEREDIA, BRENNA TERESA	679.18	Y	CLEAR
164031022-PR	11/30/12	11/30/12	HOLDER, PAULA JEANNE	706.50	Y	CLEAR
164031023-PR	11/30/12	11/30/12	HOLGUIN, DOROTHY A	364.46	Y	CLEAR

Winkler County Treasurer THE SOFTWARE GROUP, INC.	PAYROLL / PERSONNEL SYSTEM CHECK REGISTER	03:59:45pm 02 Dec 2011 PAGE 9
--	--	----------------------------------

CHECK.....	Check Date	PAYROLL DATE	Issued to.....	NET PAY..	DD	STATUS.
164031024-PR	11/30/12	11/30/12	HOLLEY, TOBY W	1,031.89	Y	CLEAR
164031025-PR	11/30/12	11/30/12	JEROME, ALLEN RAY	913.73	Y	CLEAR
164031026-PR	11/30/12	11/30/12	JOHNSON, CHERYL L.	545.13	Y	CLEAR
164031027-PR	11/30/12	11/30/12	KEMP, TEVIN SCOTT	800.74	Y	CLEAR
164031028-PR	11/30/12	11/30/12	KLINE, KATY P.	489.47	Y	CLEAR
164031029-PR	11/30/12	11/30/12	KYLE, RICHARD LESLIE	945.84	Y	CLEAR
164031030-PR	11/30/12	11/30/12	LALONDE, RODNEY L	867.09	Y	CLEAR
164031031-PR	11/30/12	11/30/12	LALONDE, SHEILA GAILE	734.66	Y	CLEAR
164031032-PR	11/30/12	11/30/12	LEAVITT, JOHN HARVEY	1,190.20	Y	CLEAR
164031033-PR	11/30/12	11/30/12	LECK, BONNIE S.	1,974.39	Y	CLEAR
164031034-PR	11/30/12	11/30/12	LUJAN, AIDA M	279.56	Y	CLEAR
164031035-PR	11/30/12	11/30/12	LUJAN, JO H	1,002.45	Y	CLEAR
164031036-PR	11/30/12	11/30/12	MITCHELL, JAMES D	1,180.35	Y	CLEAR
164031037-PR	11/30/12	11/30/12	MIXON, GLENDA J.	496.24	Y	CLEAR
164031038-PR	11/30/12	11/30/12	NEAL, RANDY M	1,266.65	Y	CLEAR
164031039-PR	11/30/12	11/30/12	OXEDINE, JULIE ANN	1,571.00	Y	CLEAR
164031040-PR	11/30/12	11/30/12	PARKER, ROSA M.	622.11	Y	CLEAR
164031041-PR	11/30/12	11/30/12	PRICE, DON WOOD	961.75	Y	CLEAR
164031042-PR	11/30/12	11/30/12	REYNOLDS, COLBY TYREL	970.00	Y	CLEAR
164031043-PR	11/30/12	11/30/12	RIVAS, SILVIA Z	792.73	Y	CLEAR
164031044-PR	11/30/12	11/30/12	RODRIGUEZ, LAURIE ANN	692.90	Y	CLEAR
164031045-PR	11/30/12	11/30/12	ROGERS, JERRY NEIL	96.70	Y	CLEAR
164031046-PR	11/30/12	11/30/12	SETTLE, CHASE E.	382.29	Y	CLEAR
164031047-PR	11/30/12	11/30/12	SHEPARD, SANDRA KAY	1,666.91	Y	CLEAR
164031048-PR	11/30/12	11/30/12	SHIPLEY, DANA A	299.04	Y	CLEAR
164031049-PR	11/30/12	11/30/12	SHIPLEY, DANA A	456.39	Y	CLEAR
164031050-PR	11/30/12	11/30/12	SHROPSHIRE, LAURIE BETH	977.86	Y	CLEAR
164031051-PR	11/30/12	11/30/12	SIMPSON, VIDA D.	961.01	Y	CLEAR
164031052-PR	11/30/12	11/30/12	SOLTERO, MINERVA ZAMARRON	979.04	Y	CLEAR
164031053-PR	11/30/12	11/30/12	SPALDING, BRIAN A	988.15	Y	CLEAR
164031054-PR	11/30/12	11/30/12	STROUD, LEON EDWARD	980.58	Y	CLEAR
164031055-PR	11/30/12	11/30/12	TALIAFERRO, NORMA ANNE	831.28	Y	CLEAR
164031056-PR	11/30/12	11/30/12	TALIAFERRO, NORMA ANNE	380.09	Y	CLEAR
164031057-PR	11/30/12	11/30/12	TALIAFERRO, NORMA ANNE	232.58	Y	CLEAR
164031058-PR	11/30/12	11/30/12	TALIAFERRO, NORMA ANNE	81.30	Y	CLEAR
164031059-PR	11/30/12	11/30/12	TALIAFERRO, STEPHEN WARREN	2,303.13	Y	CLEAR
164031060-PR	11/30/12	11/30/12	TRAMMELL, SHARON D	738.04	Y	CLEAR
164031061-PR	11/30/12	11/30/12	WILLHELM, RHONDA REJEAN	1,535.35	Y	CLEAR
164031062-PR	11/30/12	11/30/12	WILSON, COY LEE	339.61	Y	CLEAR
164031063-PR	11/30/12	11/30/12	WOLF, BLANE AUSTIN	1,120.62	Y	CLEAR
164031064-PR	11/30/12	11/30/12	WOLF, BRANDY J.	1,621.00	Y	CLEAR
164031065-PR	11/30/12	11/30/12	WOLF, CHARLES M.	785.70	Y	CLEAR
164031066-PR	11/30/12	11/30/12	WOLF, JAMES ROBERT	1,368.55	Y	CLEAR
164031067-PR	11/30/12	11/30/12	WRIGHT, SHERYL LYNN	921.67	Y	CLEAR
				61,974.39		

Winkler County Treasurer THE SOFTWARE GROUP, INC.	PAYROLL / PERSONNEL SYSTEM CHECK REGISTER	03:59:45pm 02 Dec 2011 PAGE 10
--	--	-----------------------------------

CHECK.....	Check Date	PAYROLL DATE	Issued to.....	NET PAY..	DD	STATUS.
				317,106.27		

399 records listed.

NOVEMBER BANK TRANSACTION											
DATE	RHC RECEIPT DEPOSIT	ER RECEIPT NUMBER	CHECK NUMBER	PAYROLL	ACCOUNTS PAYABLE	MASTERCARD EXPENSE	COUNTY SUPPORT	WIRE TRANSFERS	DEPOSITS	BALANCE	
11/2/2012			25000-25074	\$ 75,658.64						\$ 368,340.27	
11/6/2012			23179-23250VD							\$ 368,340.27	
11/7/2012			55000-55006	\$	7,881.96					\$ 360,458.31	
11/7/2012			55007-55009	\$	5,062.17					\$ 355,396.14	
11/12/2012			55010-55035	\$	38,036.14					\$ 317,360.00	
11/12/2012			50650-50714	\$	87,435.33					\$ 229,924.67	
11/1/2012	70730-70744	70331-70335							\$ 2,523.36	\$ 232,448.03	
11/1/2012								4,133.03		\$ 236,581.06	
11/1/2012								1,169.32		\$ 237,750.38	
11/1/2012								782.88		\$ 238,533.26	
11/1/2012								463.01		\$ 238,996.27	
11/1/2012								348.96		\$ 239,345.23	
11/1/2012								283.15		\$ 239,628.38	
11/1/2012								114.37		\$ 239,742.75	
11/1/2012								55.44		\$ 239,798.19	
11/1/2012								52.34		\$ 239,850.53	
11/2/2012	70745-70753	70336-70341							\$ 13,446.43	\$ 253,296.96	
11/2/2012								3,248.82		\$ 256,545.77	
11/2/2012								2,501.60		\$ 259,047.37	
11/2/2012								1,637.10		\$ 260,684.47	
11/2/2012								1,518.86		\$ 262,203.33	
11/2/2012								589.58		\$ 262,792.91	
11/2/2012								91.52		\$ 262,884.43	
11/2/2012								75.15		\$ 262,959.58	
11/2/2012								48.80		\$ 263,008.38	
11/5/2012	70754-70761	70342-70350				0.25			\$ 13,933.88	\$ 276,942.02	
11/5/2012								3,200.14		\$ 280,142.16	
11/5/2012								3,154.72		\$ 283,296.88	
11/5/2012								286.69		\$ 283,583.57	
11/5/2012								210.49		\$ 283,794.06	
11/5/2012								87.48		\$ 283,881.54	
11/5/2012								44.47		\$ 283,926.01	
11/6/2012	70762-70774	70351-70356							\$ 11,950.90	\$ 295,876.91	
11/6/2012								38,130.46		\$ 334,007.37	
11/6/2012								1,533.74		\$ 335,541.11	
11/6/2012								697.48		\$ 336,238.59	
11/6/2012								530.90		\$ 336,769.49	
11/6/2012								388.91		\$ 337,158.40	
11/6/2012								264.98		\$ 337,423.38	
11/6/2012								100.00		\$ 337,523.38	
11/6/2012								32.65		\$ 337,556.03	
11/7/2012	70775-70788	70357-70366							\$ 10,578.51	\$ 348,134.54	
11/7/2012										\$ 350,222.67	

[illegible]

[illegible]

11/15/2012				\$	20.00		\$	566,963.58
11/16/2012	70851-70853	70416-70422		\$	1,551.44	\$ 9,282.85	\$	576,246.43
11/16/2012				\$	1,522.98		\$	579,320.85
11/16/2012				\$	762.89		\$	580,083.74
11/16/2012				\$	582.85		\$	580,666.59
11/16/2012				\$	402.50		\$	581,069.09
11/16/2012				\$	352.80		\$	581,421.89
11/16/2012				\$	184.93		\$	581,606.82
11/16/2012				\$	181.66		\$	581,788.48
11/16/2012				\$	180.88		\$	581,969.36
11/16/2012				\$	145.80		\$	582,115.16
11/16/2012							\$	504,132.50
11/16/2012	25075-25149		\$ 77,982.66				\$	504,132.50
11/22/2012	50715-50732vd						\$	504,132.50
11/26/2012	55043-55100			\$			\$	504,132.50
11/26/2012	50733-50741			\$	204,214.62		\$	299,917.88
11/21/2012	55101-55102		\$	\$ 5,206.30			\$	294,711.58
11/30/2012	25150-25173		\$ 74,277.59		\$ 1,309.02		\$	293,402.56
11/19/2012	70854-70868	70423-70434				\$ 6,571.81	\$	219,124.97
11/19/2012						\$ 225,696.78	\$	225,696.78
11/19/2012						\$ 1.00	\$	225,697.78
11/19/2012				\$	781.23		\$	226,908.12
11/19/2012				\$	429.11		\$	227,234.94
11/19/2012				\$	326.82		\$	227,364.73
11/19/2012				\$	129.79		\$	227,445.64
11/19/2012				\$	80.91		\$	227,490.11
11/20/2012	70869-70882	70435-70442		\$	44.47	\$ 18,729.06	\$	246,219.17
11/20/2012				\$	9,246.16		\$	255,465.33
11/20/2012				\$	3,246.17		\$	258,711.50
11/20/2012				\$	1,038.27		\$	259,749.77
11/20/2012				\$	209.18		\$	259,958.95
11/20/2012				\$	86.20		\$	260,045.15
11/20/2012				\$	50.00		\$	260,095.15
11/20/2012				\$	50.00		\$	260,145.15
11/20/2012				\$	32.13		\$	260,177.28
11/21/2012	70883-70893	70443-70457				\$ 1,927.98	\$	262,105.26
11/21/2012				\$	829.57		\$	262,934.83
11/21/2012				\$	420.54		\$	263,355.37
11/21/2012				\$	128.39		\$	263,483.76
11/21/2012				\$	127.06		\$	263,610.82
11/21/2012				\$	67.27		\$	263,678.09
11/23/2012						\$ 53,240.29	\$	316,918.38
11/23/2012				\$	8,917.88		\$	325,836.26
11/23/2012				\$	8,440.23		\$	334,276.49
11/23/2012				\$	1,540.07		\$	335,816.56
11/23/2012				\$	1,138.61		\$	336,955.17
11/23/2012				\$	1,117.60		\$	338,072.77
11/23/2012				\$	985.56		\$	339,058.33
11/23/2012				\$	727.56		\$	339,785.89

Date: 12/02/2012
Time: 15:25:46

Check Register
WINKLER COUNTY HOSPITAL
11/01/2012 - 11/30/2012

Page: 1
ap/o_ckjrnl

Check No.	AP	Chk Date	Doc No	Payee	Net Amount
-----------	----	----------	--------	-------	------------

Facility: HOS - WINKLER COUNTY MEMORIAL HOSPIT

Account Number: 10000000 - CASH ON HAND

Department Number: 000 -

55000 Y	11/02/2012	1	AFLAC - CAIC	689.71
55001 Y	11/02/2012	2	AMERICAN FAMILY LIFE ASSURANCE	1,919.37
55002 Y	11/02/2012	3	FORT DEARBORN LIFE INSURANCE	239.88
55003 Y	11/02/2012	4	NATIONAL FAMILY CARE LIFE INS	12.00
55004 Y	11/02/2012	5	PATTI FRANKS, TAX ASSESSOR	100.00
55005 Y	11/02/2012	6	THE SECURITY BENEFIT GROUP	845.00
55006 Y	11/02/2012	7	WESTEX CREDIT UNION	4,076.00
55007 Y	11/07/2012	9	AMERISOURCEBERGEN DRUG CORP	2,477.62
55008 Y	11/07/2012	8	AT&T	2,118.01
55009 Y	11/07/2012	10	AT&T	466.54
55010 Y	11/12/2012	11	AIR FILTRATION PRODUCTS & SVC	94.80
55011 Y	11/12/2012	12	AMERICAN SOLUTIONS	556.50
55012 Y	11/12/2012	13	BEN E KEITH	556.06
55013 Y	11/12/2012	14	BIBBY FINANCIAL SERVICES CA,IN	3,286.25
55014 Y	11/12/2012	15	BLAINE INDUSTRIAL SUPPLY	49.00
55015 Y	11/12/2012	16	BRIGGS CORPORATION	76.83
55016 Y	11/12/2012	17	CARDINAL HEALTH	866.32
55017 Y	11/12/2012	18	CARDINAL HEALTH	24.70
55018 Y	11/12/2012	19	GE CAPITAL	2,826.47
55019 Y	11/12/2012	20	LABORATORY SUPPLY CO	938.92
55020 Y	11/12/2012	21	NATIONAL HEATING & PLUMBING	3,092.08
55021 Y	11/12/2012	22	NEWEGG.COM	34.99
55022 Y	11/12/2012	23	OFFICE DEPOT	701.76
55023 Y	11/12/2012	24	OLIVER PRODUCTS	1,784.00
55024 Y	11/12/2012	25	PHYSICIAN SALES & SERVICE	401.75
55025 Y	11/12/2012	26	PROTECH SERVICES	1,066.20
55026 Y	11/12/2012	27	SHELBY, JULIE	4,700.00
55027 Y	11/12/2012	28	SIEMENS FINANCIAL SERVICES	742.00
55028 Y	11/12/2012	29	SIEMENS HEALTHCARE DIAGNOSTICS	2,706.21
55029 Y	11/12/2012	30	STERICYCLE INC	1,176.83
55030 Y	11/12/2012	31	SUDDENLINK	344.10
55031 Y	11/12/2012	32	TAMHSC	1,925.00
55032 Y	11/12/2012	33	TEXAS SELECT STAFFING, LLC	1,998.00
55033 Y	11/12/2012	34	TOSHIBA AMERICA MEDICAL	5,494.00
55034 Y	11/12/2012	35	US FOODSERVICE INC	1,982.77
55035 Y	11/12/2012	36	WAGNER SUPPLY COMPANY	610.60
55036 Y	11/14/2012	37	AMERISOURCEBERGEN DRUG CORP	600.67
55037 Y	11/14/2012	38	CITY OF KERMIT	640.80
55038 Y	11/14/2012	39	WEST TEXAS GAS INC	259.36
55039 Y	11/16/2012	40	ACCOUNTS RECEIVABLE	470.00
55040 Y	11/16/2012	41	PATTI FRANKS, TAX ASSESSOR	100.00
55041 Y	11/16/2012	42	THE SECURITY BENEFIT GROUP	865.00
55042 Y	11/16/2012	43	WESTEX CREDIT UNION	4,911.00
55043 Y	11/26/2012	44	AIRGAS SOUTHWEST INC	1,646.35
55044 Y	11/26/2012	45	ALCO DISCOUNT STORE	203.09
55045 Y	11/26/2012	46	ALERE TOXICOLOGY SERVICES, INC	40.00

PROGNOSIS HEALTH INFORMATION SYS.

Requested By: jwillhelm

Page: 1

Date: 12/02/2012
Time: 15:25:46

Check Register
WINKLER COUNTY HOSPITAL
11/01/2012 - 11/30/2012

Page: 2
ap/o_ckjrn1

Check No.	AP	Chk Date	Doc No	Payee	Net Amount
55046	Y	11/26/2012	47	AMERICAN SOLUTIONS	505.16
55047	Y	11/26/2012	48	ANTHELIO HEALTHCARE SOLUTIONS	370.50
55048	Y	11/26/2012	49	BAXTER IV SYSTEMS DIV	772.32
55049	Y	11/26/2012	50	BEN E KEITH	1,632.85
55050	Y	11/26/2012	51	BIBBY FINANCIAL SERVICES CA,IN	10,753.25
55051	Y	11/26/2012	52	CANON FINANCIAL SERVICES, INC.	813.98
55052	Y	11/26/2012	53	CARDINAL HEALTH	3,756.13
55053	Y	11/26/2012	54	CLARK, JOHN	1,100.00
55054	Y	11/26/2012	55	COMMERCIAL ICE MACHINE COMPANY	324.50
55055	Y	11/26/2012	56	CONCORD MEDICAL GROUP	45,540.00
55056	Y	11/26/2012	57	DOCTOR STANLY T SELBY PA	4,619.44
55057	Y	11/26/2012	58	ENGLAND ENTERPRISES	825.00
55058	Y	11/26/2012	59	ETACTICS, INC.	1,357.85
55059	Y	11/26/2012	60	FED-EX	31.89
55060	Y	11/26/2012	61	HD SUPPLY FACILITIES	313.95
55061	Y	11/26/2012	62	HEALTH CARE LOGISTICS INC	70.26
55062	Y	11/26/2012	63	HEALTHLAND	1,048.46
55063	Y	11/26/2012	64	HOSPITAL RECEIVABLES SVC, INC.	232.04
55064	Y	11/26/2012	65	JAMES S. EVERETT	1,650.00
55065	Y	11/26/2012	66	LABORATORY CORPORATION OF	2,685.62
55066	Y	11/26/2012	67	LABORATORY SUPPLY CO	6,744.99
55067	Y	11/26/2012	68	LOWE'S MARKETPLACE	150.39
55068	Y	11/26/2012	69	MANGARON JANETTE	50.73
55069	Y	11/26/2012	70	MASTERCARD	447.63
55070	Y	11/26/2012	71	MEDICAL ADVOCACY SVCS	221.33
55071	Y	11/26/2012	72	MEDICAL DEBT MANAGEMENT, INC	848.76
55072	Y	11/26/2012	73	MEDLINE INDUSTRIES INC	399.25
55073	Y	11/26/2012	74	MEDTRAN DIRECT, INC	1,260.00
55074	Y	11/26/2012	75	MINDRAY DS USA, INC	969.60
55075	Y	11/26/2012	76	MOORE MEDICAL,LLC	140.95
55076	Y	11/26/2012	77	NAOMI SOLTERO	201.80
55077	Y	11/26/2012	78	NEWEGG.COM	219.98
55078	Y	11/26/2012	79	OFFICE DEPOT	1,136.41
55079	Y	11/26/2012	80	PERRY JOHNSON & ASSOCIATES INC	243.50
55080	Y	11/26/2012	81	POSTMASTER	180.00
55081	Y	11/26/2012	82	PREFERRED HOSPITAL LEASING	25,810.00
55082	Y	11/26/2012	83	PROFESSIONAL DIETARY	585.00
55083	Y	11/26/2012	84	RIO GRAND PATHOLOGY SERVICES	1,100.00
55084	Y	11/26/2012	85	SHELBY, JULIE	5,040.00
55085	Y	11/26/2012	86	SIEMENS HEALTHCARE DIAGNOSTICS	9,523.59
55086	Y	11/26/2012	87	SOUTH PLAINS BIOMEDICAL SER.	1,640.84
55087	Y	11/26/2012	88	SOUTHPLAINS BIOMEDICAL SERV	4,545.00
55088	Y	11/26/2012	89	SPECTRA CORP	25.00
55089	Y	11/26/2012	90	T-SYSTEM, INC.	1,087.68
55090	Y	11/26/2012	91	TERMINIX PROCOESSING CENTER	200.00
55091	Y	11/26/2012	92	THOMAS NG TECHNOLOGIES, INC	1,925.00
55092	Y	11/26/2012	93	TRIDENT MEDIA SERVICES	175.00
55093	Y	11/26/2012	94	TX DEPT OF STATE HEALTH SERV	1,972.00
55094	Y	11/26/2012	95	UNITED BLOOD SERVICES	892.00
55095	Y	11/26/2012	96	US FOODSERVICE INC	2,674.83
55096	Y	11/26/2012	97	WAGNER SUPPLY COMPANY	606.35

=====

PROGNOSIS HEALTH INFORMATION SYS. Requested By: jwillhelm Page: 2

Date: 12/02/2012
Time: 15:25:46

Check Register
WINKLER COUNTY HOSPITAL
11/01/2012 - 11/30/2012

Page: 3
ap/o_ckjrn1

Check No.	AP	Chk Date	Doc No	Payee	Net Amount
55097	Y	11/26/2012	98	WINKLER COUNTY AUDITORS	52,407.07
55098	Y	11/26/2012	99	WINKLER COUNTY NEWS	285.00
55099	Y	11/26/2012	100	WOLF VIRGINIA	55.50
55100	Y	11/26/2012	101	ZIMMER	156.80
55101	Y	11/21/2012	102	AMERISOURCEBERGEN DRUG CORP	1,260.33
55102	Y	11/21/2012	103	AT&T	48.69
55103	Y	11/28/2012	104	AMERISOURCEBERGEN DRUG CORP	406.19
55104	Y	11/28/2012	105	WINKLER COUNTY AUDITORS	72,329.67
55105	Y	11/30/2012	106	PATTI FRANKS, TAX ASSESSOR	100.00
55106	Y	11/30/2012	107	THE SECURITY BENEFIT GROUP	865.00
55107	Y	11/30/2012	108	WESTEX CREDIT UNION	4,201.00
55108	Y	11/30/2012	109	THOMAS NG TECHNOLOGIES, INC	1,925.00
55109	Y	11/30/2012	110	WINKLER COUNTY AUDITORS	137,241.82

Totals For: HOS Total Checks: 110 Amount: 481,419.42

Grand Totals: Total Checks: 110 Amount: 481,419.42

11/25/2012 10:38

A/P Check Register

Page 1
AP506R

O P T I O N S

Sort will be by company # by cash account #
Company Range Option:
Start: 0000 WINKLER COUNTY MEMORIAL HOSPIT End: 9999
Start check date....: 11/01/2012 End check date....: 11/30/2012
Omit Discounts from the register?: N
Detail or Summary Register (D/S)....: S
Omit void (unused) checks?.....: N
Start new page after cash account?: Y
User Rpt Heading....:
Printer Queue.....: AD
Printing option.....: 1 (1-Print only, 2-Image only, 3-Print & Image)
Print Receipt Page?...: Y
Report & options selected by: JEANNAM
Selected from workstation....: SMITHHELM

MINKER COUNTY MEMORIAL HOSPIT 0000				A/P Check Register		Page 2	
11/25/2012 10:38				AP508R			
Check #	Chk Date	Vendor#	Vendor Name	Vendor Type	M/C Discount Amt.	Check Amount	Status
50650	11/12/12	2290	AGENCY 405	C		12.00	
50651	11/12/12	1938	AIR FILTRATION PRODUCTS & SVC	C		94.80	
50652	11/12/12	9	AIRGAS SOUTHWEST INC	C		1,325.13	
50653	11/12/12	2077	AMERICAN SOLUTIONS	C		559.61	
50654	11/12/12	2523	AMERIGROUP	C		101.60	
50655	11/12/12	137	GOLDEN LIGHT EQUIPMENT CO	C		156.95	
50656	11/12/12	38	BAKTER LV SYSTEMS DIV	C		395.52	
50657	11/12/12	1486	BAITREE LEASING COMPANY, LLC	C		1,910.55	
50658	11/12/12	1022	BLUE CROSS BLUE SHIEL OF TEXAS	C		69.47	
50659	11/12/12	41	BEN E KEITH	C		817.56	
50660	11/12/12	2254	BDI CPA'S & ADVISORS	C		1,108.54	
50661	11/12/12	1992	BLAKE DALE	C		48.08	
50662	11/12/12	2293	CANON FINANCIAL SERVICES, INC.	C		813.98	
50663	11/12/12	15	CARDINAL HEALTH	C		155.18	
50664	11/12/12	2529	CARE IMPROVEMENT PLUS	C		31.25	
50665	11/12/12	2538	CARL GILBREATH	C		36.60	
50666	11/12/12	1745	CDC BUSINESS SYSTEMS, INC.	C		251.58	
50667	11/12/12	1745	DEPARTMENT OF INFO RESOURCES	C		942.10	
50668	11/12/12	2520	DEBOUTEL GRANTLID	C		100.00	
50669	11/12/12	1549	DEBOUTEL GRANTLID	C		4,202.24	
50670	11/12/12	2533	CRISTIANO OUTSON	C		125.00	
50671	11/12/12	1733	HARTLEY KANNAN	C		135.03	
50672	11/12/12	152	HD SUPPLY FACILITIES	C		273.03	
50673	11/12/12	1085	HOLLY DENNY	C		778.92	
50674	11/12/12	164	IVANS	C		327.00	
50675	11/12/12	2528	JAMES BINDEL	C		33.00	
50676	11/12/12	1278	JENNINGS JERRI	C		53.12	
50677	11/12/12	2524	JERRY GRAVES	C		55.05	
50678	11/12/12	2531	JOANA JAMISON	C		15.00	
50679	11/12/12	2535	JOHN B WALTON	C		47.41	
50680	11/12/12	2535	JOHN MERRYMAN	C		12.00	
50681	11/12/12	2534	KELIA PAGE	C		49.63	
50682	11/12/12	2537	KELLY COLEMAN	C		125.30	
50683	11/12/12	1179	LABORATORY SUPPLY CO-50570	C		1,113.64	
50684	11/12/12	1156	LONG BRNTE	C		24.58	
50685	11/12/12	2526	MEDFORD CHEMISTS	C		286.50	
50686	11/12/12	2526	MEDLINE INDUSTRIES INC	C		377.56	
50687	11/12/12	1547	MERCKE BRAND	C		30.28	
50688	11/12/12	2526	MOLINE HENSCARE	C		16.20	
50689	11/12/12	222	MOORE MEDICAL LLC	C		93.85	
50690	11/12/12	762	MOYA CRYSTAL	C		18.58	
50691	11/12/12	214	NAOMI SOUTERO	C		360.03	
50692	11/12/12	236	OFFICE DEPOT	C		1,638.42	
50693	11/12/12	2530	PAUL HUNT	C		30.00	
50694	11/12/12	2493	PC MALL	C		64.04	
50695	11/12/12	2521	PLAYSCAPES	C		2,593.85	
50696	11/12/12	370	PROFESSIONAL DIETARY	C		625.00	
50697	11/12/12	452	QUILL CORPORATION	C		460.94	
50698	11/12/12	879	QUIROZ MARTHA	C		35.00	
50699	11/12/12	2522	RECOGNITION	C		208.50	
50700	11/12/12	264	RIBBY FINANCIAL SERVICES CA, IN	C		6,217.61	
50701	11/12/12	2228	DOCTOR STANLY T SELBY PA	C		33,333.33	
50702	11/12/12	82	SIEMENS HEALTHCARE DIAGNOSTICS	C		3,283.09	
50703	11/12/12	1550	SIEMENS FINANCIAL SERVICES	C		409.40	

WINKLER COUNTY MEMORIAL HOSPIT 0000				A/P Check Register		Page 3	
11/25/2012 10:18				AF504R			
Check #	Chk Date	Vendor#	Vendor name	Vendor Type	M/C Discount Amt.	Check Amount	Status
50704	11/12/12	280	STICK'S AUTO SUPPLY & HOME INC	C		114.19	Void/Not Used
50705	11/12/12	1554	SOUTHERN HUMBOLDT	C		11.40	Void/Not Used
50706	11/12/12	2316	SPROCTA CORP	C		35.00	Void/Not Used
50707	11/12/12	307	TEXAS "I" PAC	C		380.00	Void/Not Used
50708	11/12/12	2527	TEXAS A&M HEALTH SCIENCE CNTR	C		4,700.00	Void/Not Used
50709	11/12/12	1839	TOSHIBA AMERICA MEDICAL CREDIT	C		12,787.30	Void/Not Used
50710	11/12/12	2536	TRICARE PRIME MFS CAMPUS	C		18.60	Void/Not Used
50711	11/12/12	2386	RR DONNELLEY	C		54.37	Void/Not Used
50712	11/12/12	335	UNITED BLOOD SERVICES	C		901.00	Void/Not Used
50713	11/12/12	330	US FOODSERVICE INC	C		1,845.70	Void/Not Used
50714	11/12/12	2338	THE WINKLER POST	C		200.00	Void/Not Used
50715	11/20/12			C			Void/Not Used
50716	11/20/12			C			Void/Not Used
50717	11/20/12			C			Void/Not Used
50718	11/20/12			C			Void/Not Used
50719	11/20/12			C			Void/Not Used
50720	11/20/12			C			Void/Not Used
50721	11/20/12			C			Void/Not Used
50722	11/20/12			C			Void/Not Used
50723	11/20/12			C			Void/Not Used
50724	11/20/12			C			Void/Not Used
50725	11/20/12			C			Void/Not Used
50726	11/20/12			C			Void/Not Used
50727	11/20/12			C			Void/Not Used
50728	11/20/12			C			Void/Not Used
50729	11/20/12			C			Void/Not Used
50730	11/20/12			C			Void/Not Used
50731	11/20/12			C			Void/Not Used
50732	11/20/12			C			Void/Not Used
50733	11/26/12	2523	AMERIGROUP	C		181.17	Void/Not Used
50734	11/26/12	2512	CINA MILLER	C		25.82	Void/Not Used
50735	11/26/12	1647	HUMANA GOLD CHOICE	C		2,172.46	Void/Not Used
50736	11/26/12	1966	HUMANA HEALTH CARE PLANS	C		170.54	Void/Not Used
50737	11/26/12	2326	ANGIE SIMS	C		763.60	Void/Not Used
50738	11/26/12	617	TNL	C		340.71	Void/Not Used
50739	11/26/12	1538	UNITED HEALTHCARE	C		95.88	Void/Not Used
50740	11/26/12	2540	WINDSOR STERLING	C		1,444.00	Void/Not Used
50741	11/26/12	2541	ZENITH STEVENS	C		12.12	Void/Not Used
Totals for cash account... 0000-1000-0000 CASH ON HAND							
Total # checks: 91						92,641.63	
# voided checks: 17							
# non-voided checks: 74						92,641.63	
Totals for company:							
Total # checks: 91						92,641.63	
# voided checks: 17							
# non-voided checks: 74						92,641.63	

* * * * * END OF REPORT * * * * *

Date: 12/02/2012
Time: 15:20:45

Payroll Check Journal
WINKLER COUNTY HOSPITAL
From 11/01/2012 to 11/30/2012

Page: 1
py/o_chkjrn

=====

Income Totals:

1	REGULAR PAY	169,663.57
16	CELL PHONE	150.00
17	ON CALL PAY	1,132.75
18	LONGEVITY PAY	4,140.00
19	C.O.L.A.	8,841.81
1ERDLV	ER DAY SHIFT LVN'S	5,610.52
1ERDRN	ER DAY SHIFT RN'S	17,173.00
1ERNLV	ER NIGHT SHIFT LVN'S	7,588.85
1ERNRN	ER NIGHT SHIFT RN'S	5,644.81
1LAB	LABORATORY TECH WEEKEND	2,100.00
1RAD	RADIOLOGY TECH WEEKEND	3,300.00
2	OVERTIME	29,176.79
3	CALL BACK	392.39
4	SALARY	38,317.32
5	PTO	23,321.17
6	SICK	7,863.66
9	WORKSHOP	2,533.77
Total:		326,950.41

Deduction Totals:

1	TCDRS	20,570.39
10	AFL N/T	1,352.69
11	WCCU	13,188.00
13	ADDED VALERIUM TAX	300.00
14	NATIONAL FAMILY CA	12.00
15	VOLUNTARY LIFE	239.88
18	457 PLAN	2,575.00
2	HEALTH N/T	2,577.50
22	AFL CI TAX	689.71
3	HEALTH TAX	740.00
4	DENTAL N/T	770.00
5	DENTAL TAX	250.00
6	FLEX MED	375.00
7	AR HOSPITAL	470.00
9	AFL - TAX	566.68
FEDTAX	FEDERAL WITHHOLDING	37,531.69
FICA	EMPLOYEE FICA	12,155.78
MEDICR	EMPLOYEE MEDICARE	4,667.19
Total:		99,031.51

Obligation Totals:

FICA	EMPLOYER FICA	17,944.06
MEDICR	EMPLOYER MEDICARE	4,667.19
SUTA	STATE UNEMPLOYMENT	261.47
Total:		22,872.72

Checks on account: 10000000 - CASH ON HAND

Department: 000 -

Check No.	Doc No.	Check Date	Employee Name	Amount
=====				
PROGNOSIS HEALTH INFORMATION SYS.			Requested By: jwillhelm	Page: 1

Date: 12/02/2012
Time: 15:20:46

Payroll Check Journal
WINKLER COUNTY HOSPITAL
From 11/01/2012 to 11/30/2012

Page: 2
py/o_chkjrn

```
=====
11161201      533      11/16/2012 RUSHING, MICHELLE R                      728.77
11301201      623      11/30/2012 GARCIA, SALLY A                      1,715.65
11301202      644      11/30/2012 GRAVES, SUE ANN                      1,251.38
11301203      670      11/30/2012 KEELY, DARLA J                      1,768.51
11301204      679      11/30/2012 MARTZ, ASHLY LYNN                      1,556.79
11301205      637      11/30/2012 SALINAS, CHRISTIAN J                      619.66
11301206      617      11/30/2012 SALINAS, TONI                      742.69
11301207      608      11/30/2012 TAYLOR, JONI LYNNE                      1,307.90
11301208      651      11/30/2012 VALERIO, PEGGY R                      1,143.05
11301209      639      11/30/2012 AMOROSO, VINCENT MICHAEL                    1,535.65
11301210      666      11/30/2012 ARNOLD, SHEILA GAY                      1,353.53
11301211      676      11/30/2012 BLACKBURN, SHANNA SHEA                      559.85
11301212      638      11/30/2012 DENNY, HOLLY D.                      873.80
11301213      658      11/30/2012 DE LA TORRE, ELINORE JUNE                    1,137.41
11301214      665      11/30/2012 MANGARON, JANETTE JUMAWAN                    1,854.35
11301215      609      11/30/2012 SEE, FRANCIS C.                      557.55
11301216      653      11/30/2012 KOHANEK, HEATH                      1,059.68
11301217      681      11/30/2012 TAVAREZ, KEVIN L                      465.57
11301218      668      11/30/2012 NEBOH, STELLA NJEMANZE                    1,244.47
11301219      648      11/30/2012 VELASQUEZ, GENIVA HEREDIA                      710.87
11301220      614      11/30/2012 BAILEY, MARCELLA A                      367.58
11301221      664      11/30/2012 BLAND, DONNA ANGELINE                      609.12
11301222      643      11/30/2012 COMPTON, FELICIA G.                      630.43
11301223      677      11/30/2012 DUNLAP, JOANNE DENIECE                      734.51
11301224      626      11/30/2012 GRAVES, SANDRA N.                      502.56
11301225      621      11/30/2012 HULSLANDER, MELINDA                      372.15
11301226      629      11/30/2012 LONG, RIKKI LYNN                      559.28
11301227      615      11/30/2012 PERCIFIELD, JANA                      684.28
11301228      671      11/30/2012 SOLTERO, NAOMI                      1,041.82
11301229      634      11/30/2012 VILLALPANDO, ADRIANA L                      761.05
11301230      680      11/30/2012 GRAY, HAZEL R                      420.30
11301231      657      11/30/2012 HASTON, KATHY J.                      428.81
11301232      628      11/30/2012 NAVARRETE, GREGORIA                      573.33
11301233      632      11/30/2012 ROBINSON, ALECIA A                      686.35
11301234      661      11/30/2012 FLYNN, ELIDIA G                      636.75
11301235      672      11/30/2012 JUAREZ, JOSEFINA L                      590.71
11301236      675      11/30/2012 QUIROZ, MARTHA JAQUEZ                      790.01
11301237      647      11/30/2012 RIOS, CORINA GOMEZ                      663.26
11301238      655      11/30/2012 ADAMS, MELANIE ALANE                    1,257.99
11301239      669      11/30/2012 FUQUA, DEBBIE D.                      712.78
11301240      673      11/30/2012 NORMAN, CHARLOTTE K.                      721.28
11301241      616      11/30/2012 LUJAN, YSENIA ARANDA                      759.39
11301242      667      11/30/2012 RUSHING, MICHELLE R                      664.22
11301243      663      11/30/2012 PAEHL, DONNA M.                      1,497.93
11301244      624      11/30/2012 DARLING, AMANDA                      4,061.04
11301245      636      11/30/2012 FORTUNE, CARLA J                      653.46
11301246      613      11/30/2012 MACFARLANE, MICHELLE                    4,170.66
11301247      635      11/30/2012 MARQUEZ, BIANCA ALYSE                      692.56
11301248      652      11/30/2012 NARANJO, BELINDA                      1,011.89
11301249      622      11/30/2012 PEREZ, JEANETTE MARRER                      727.83
11301250      633      11/30/2012 SOLTERO, JEHNIFER SHEAN                    1,145.06
2              378      11/02/2012 RUSHING, MICHELLE R                      .01
25000          342      11/02/2012 CARTER, KERRIA DEAN                      1,321.97
25001          350      11/02/2012 DAWSON, KATHLEEN                      780.99
=====
```

PROGNOSIS HEALTH INFORMATION SYS.

Requested By: jwillhelm

Page: 2

Date: 12/02/2012
Time: 15:20:46

Payroll Check Journal
WINKLER COUNTY HOSPITAL
From 11/01/2012 to 11/30/2012

Page: 3
py/o_chkjrn

```
=====
25002      371      11/02/2012 DURAN, MELISSA C                      1,865.04
25003      316      11/02/2012 GARCIA, SALLY A                        1,642.97
25004      337      11/02/2012 GRAVES, SUE ANN                          1,095.50
25005      363      11/02/2012 KEELY, DARLA J                            1,639.77
25006      372      11/02/2012 MARTZ, ASHLY LYNN                          1,464.07
25007      375      11/02/2012 OGLESBY, CHRISTEN A                          701.78
25008      339      11/02/2012 PEREZ, CHRISTINA J.                          442.28
25009      334      11/02/2012 SAENZ, RAPHAEL                             2,699.55
25010      330      11/02/2012 SALINAS, CHRISTIAN J                          768.03
25011      310      11/02/2012 SALINAS, TONI                             686.27
25012      374      11/02/2012 SMITH, MISTY G                               391.55
25013      302      11/02/2012 TAYLOR, JONI LYNNE                          1,172.86
25014      360      11/02/2012 THEODORE, MELISSA S                           352.19
25015      343      11/02/2012 VALERIO, PEGGY R                             2,077.00
25016      332      11/02/2012 AMOROSO, VINCENT MICHAEL                     1,910.67
25017      335      11/02/2012 ARNOLD, MALLARY BETH                       1,432.20
25018      358      11/02/2012 ARNOLD, SHEILA GAY                          1,382.67
25019      369      11/02/2012 BLACKBURN, SHANNA SHEA                       399.53
25020      351      11/02/2012 BROWN, CHARLOTTE L.                        1,190.38
25021      331      11/02/2012 DENNY, HOLLY D.                            1,275.85
25022      304      11/02/2012 DUTTON, LINDA                               920.13
25023      347      11/02/2012 HERRERA, SHARLA JAN                          791.34
25024      349      11/02/2012 DE LA TORRE, ELINORE JUNE                   1,216.31
25025      313      11/02/2012 JAMES, AMANDA M                             367.06
25026      356      11/02/2012 MANGARON, JANETTE JUMAWAN                   1,879.94
25027      303      11/02/2012 SEE, FRANCIS C.                             557.55
25028      320      11/02/2012 WOLF, VIRGINIA ANN                          1,356.07
25029      311      11/02/2012 BUSTAMANTE, YASMEEN                         467.50
25030      376      11/02/2012 CRAWFORD, SHAY A                             585.26
25031      357      11/02/2012 ESPARZA, JESSICA                            311.04
25032      353      11/02/2012 MANCHA, JOSE M.                             2,970.56
25033      338      11/02/2012 WIDNER, WILLIAM BRADY                       432.84
25034      361      11/02/2012 NEBOH, STELLA NJEMANZE                     1,354.58
25035      341      11/02/2012 VELASQUEZ, GENIVA HEREDIA                   648.51
25036      318      11/02/2012 ACEVEDO, YOBRIELDA                          711.72
25037      307      11/02/2012 BAILEY, MARCELLA A                          709.08
25038      355      11/02/2012 BLAND, DONNA ANGELINE                       632.87
25039      336      11/02/2012 COMPTON, FELICIA G.                         339.31
25040      370      11/02/2012 DUNLAP, JOANNE DENIECE                      704.24
25041      319      11/02/2012 GRAVES, SANDRA N.                           611.28
25042      314      11/02/2012 HULSLANDER, MELINDA                         372.15
25043      322      11/02/2012 LONG, RIKKI LYNN                           551.78
25044      308      11/02/2012 PERCIFIELD, JANA                            658.91
25045      324      11/02/2012 SERBANTEZ, ANNETTE MARIE                    717.53
25046      364      11/02/2012 SOLTERO, NAOMI                             1,063.91
25047      327      11/02/2012 VILLALPANDO, ADRIANA L                       843.09
25048      373      11/02/2012 GRAY, HAZEL R                               567.02
25049      348      11/02/2012 HASTON, KATHY J.                             468.89
25050      323      11/02/2012 MILLER, LACOSTA POOL                         494.42
25051      321      11/02/2012 NAVARRETE, GREGORIA                         592.45
25052      325      11/02/2012 ROBINSON, ALECIA A                          680.03
25053      352      11/02/2012 FLYNN, ELIDIA G                             599.62
25054      365      11/02/2012 JUAREZ, JOSEFINA L                          582.17
25055      368      11/02/2012 QUIROZ, MARTHA JAQUEZ                       581.70
=====
```

PROGNOSIS HEALTH INFORMATION SYS.

Requested By: jwillhelm

Page: 3

Date: 12/02/2012
Time: 15:20:46

Payroll Check Journal
WINKLER COUNTY HOSPITAL
From 11/01/2012 to 11/30/2012

Page: 4
py/o_chkjrn

25056	340	11/02/2012	RIOS, CORINA GOMEZ	686.63
25057	346	11/02/2012	ADAMS, MELANIE ALANE	1,286.14
25058	362	11/02/2012	FUQUA, DEBBIE D.	769.54
25059	366	11/02/2012	NORMAN, CHARLOTTE K.	796.06
25060	345	11/02/2012	DOBSON, CHRISTOPHER	801.58
25061	309	11/02/2012	LUJAN, YSENIA ARANDA	751.55
25062	359	11/02/2012	RUSHING, MICHELLE R	738.86
25063	354	11/02/2012	PAEHL, DONNA M.	1,351.93
25064	305	11/02/2012	CARRASCO, NERBIDA	547.75
25065	317	11/02/2012	DARLING, AMANDA	3,895.58
25066	329	11/02/2012	FORTUNE, CARLA J	652.97
25067	367	11/02/2012	LARA, LUCERO A.	965.22
25068	306	11/02/2012	MACFARLANE, MICHELLE	4,038.08
25069	328	11/02/2012	MARQUEZ, BIANCA ALYSE	656.61
25070	312	11/02/2012	MORALES, YARAVY FATIMA	713.12
25071	344	11/02/2012	NARANJO, BELINDA	909.82
25072	315	11/02/2012	PEREZ, JEANETTE MARRER	637.25
25073	326	11/02/2012	SOLTERO, JEHNIFER SHEAN	1,121.59
25074	333	11/02/2012	BARAJAS, OSCAR R.	1,304.38
25075	495	11/16/2012	CARTER, KERRIA DEAN	1,729.13
25076	506	11/16/2012	DAWSON, KATHLEEN	715.69
25077	524	11/16/2012	DURAN, MELISSA C	1,529.09
25078	469	11/16/2012	GARCIA, SALLY A	1,773.25
25079	490	11/16/2012	GRAVES, SUE ANN	1,286.78
25080	516	11/16/2012	KEELY, DARLA J	1,672.52
25081	525	11/16/2012	MARTZ, ASHLY LYNN	1,744.87
25082	491	11/16/2012	PEREZ, CHRISTINA J.	573.06
25083	487	11/16/2012	SAENZ, RAPHAEL	2,406.26
25084	483	11/16/2012	SALINAS, CHRISTIAN J	797.41
25085	463	11/16/2012	SALINAS, TONI	704.01
25086	527	11/16/2012	SMITH, MISTY G	1,078.17
25087	455	11/16/2012	TAYLOR, JONI LYNNE	1,202.76
25088	496	11/16/2012	URIQUIDI, MISTI DAWN	226.44
25089	497	11/16/2012	VALERIO, PEGGY R	982.09
25090	485	11/16/2012	AMOROSO, VINCENT MICHAEL	1,989.28
25091	488	11/16/2012	ARNOLD, MALLARY BETH	1,434.05
25092	513	11/16/2012	ARNOLD, SHEILA GAY	1,268.70
25093	522	11/16/2012	BLACKBURN, SHANNA SHEA	282.19
25094	507	11/16/2012	BROWN, CHARLOTTE L.	1,228.06
25095	484	11/16/2012	DENNY, HOLLY D.	945.20
25096	457	11/16/2012	DUTTON, LINDA	898.63
25097	502	11/16/2012	HERRERA, SHARLA JAN	1,121.65
25098	504	11/16/2012	DE LA TORRE, ELINORE JUNE	1,098.96
25099	466	11/16/2012	JAMES, AMANDA M	339.96
25100	512	11/16/2012	MANGARON, JANETTE JUMAWAN	2,026.69
25101	456	11/16/2012	SEE, FRANCIS C.	557.55
25102	494	11/16/2012	SWANSON, MARILYN LEE	606.52
25103	473	11/16/2012	WOLF, VIRGINIA ANN	1,586.92
25104	464	11/16/2012	BUSTAMANTE, YASMEEN	585.56
25105	528	11/16/2012	CRAWFORD, SHAY A	517.69
25106	499	11/16/2012	KOHANEK, HEATH	679.32
25107	509	11/16/2012	MANCHA, JOSE M.	2,502.54
25108	529	11/16/2012	TAVAREZ, KEVIN L	563.77
25109	514	11/16/2012	NEBOH, STELLA NJEMANZE	1,354.58

PROGNOSIS HEALTH INFORMATION SYS.

Requested By: jwillhelm

Page: 4

Date: 12/02/2012
Time: 15:20:46

Payroll Check Journal
WINKLER COUNTY HOSPITAL
From 11/01/2012 to 11/30/2012

Page: 5
py/o_chkjrn

25110	493	11/16/2012	VELASQUEZ, GENIVA HEREDIA	668.63
25111	471	11/16/2012	ACEVEDO, YOBRIELDA	741.33
25112	460	11/16/2012	BAILEY, MARCELLA A	709.08
25113	511	11/16/2012	BLAND, DONNA ANGELINE	670.63
25114	489	11/16/2012	COMPTON, FELICIA G.	621.81
25115	523	11/16/2012	DUNLAP, JOANNE DENIECE	715.72
25116	472	11/16/2012	GRAVES, SANDRA N.	611.28
25117	467	11/16/2012	HULSLANDER, MELINDA	393.57
25118	475	11/16/2012	LONG, RIKKI LYNN	541.78
25119	461	11/16/2012	PERCIFIELD, JANA	649.85
25120	477	11/16/2012	SERBANTEZ, ANNETTE MARIE	722.71
25121	517	11/16/2012	SOLTERO, NAOMI	1,128.06
25122	480	11/16/2012	VILLALPANDO, ADRIANA L	647.07
25123	505	11/16/2012	COMPTON, PATRICIA S.	1,359.58
25124	526	11/16/2012	GRAY, HAZEL R	673.09
25125	503	11/16/2012	HASTON, KATHY J.	544.44
25126	476	11/16/2012	MILLER, LACOSTA POOL	592.84
25127	474	11/16/2012	NAVARRETE, GREGORIA	598.73
25128	478	11/16/2012	ROBINSON, ALECIA A	680.03
25129	508	11/16/2012	FLYNN, ELIDIA G	653.52
25130	518	11/16/2012	JUAREZ, JOSEFINA L	651.76
25131	521	11/16/2012	QUIROZ, MARTHA JAQUEZ	815.59
25132	492	11/16/2012	RIOS, CORINA GOMEZ	717.25
25133	501	11/16/2012	ADAMS, MELANIE ALANE	1,331.39
25134	515	11/16/2012	FUQUA, DEBBIE D.	777.56
25135	519	11/16/2012	NORMAN, CHARLOTTE K.	796.06
25136	500	11/16/2012	DOBSON, CHRISTOPHER	521.43
25137	462	11/16/2012	LUJAN, YSENIA ARANDA	772.03
25138	510	11/16/2012	PAEHL, DONNA M.	1,547.51
25139	486	11/16/2012	BARAJAS, OSCAR R.	1,250.06
25140	458	11/16/2012	CARRASCO, NEREIDA	555.32
25141	470	11/16/2012	DARLING, AMANDA	4,009.78
25142	482	11/16/2012	FORTUNE, CARLA J	668.52
25143	520	11/16/2012	LARA, LUCERO A.	1,035.26
25144	459	11/16/2012	MACFARLANE, MICHELLE	4,089.39
25145	481	11/16/2012	MARQUEZ, BIANCA ALYSE	614.71
25146	465	11/16/2012	MORALES, YARAVY FATIMA	436.07
25147	498	11/16/2012	NARANJO, BELINDA	1,016.41
25148	468	11/16/2012	PEREZ, JEANETTE MARRER	608.35
25149	479	11/16/2012	SOLTERO, JEHNIFER SHEAN	1,106.34
25150	649	11/30/2012	CARTER, KERRIA DEAN	1,632.77
25151	659	11/30/2012	DAWSON, KATHLEEN	748.86
25152	678	11/30/2012	DURAN, MELISSA C	1,617.26
25153	610	11/30/2012	LEWIS, MERRILEE ANN	145.62
25154	646	11/30/2012	PEREZ, CHRISTINA J.	521.71
25155	641	11/30/2012	SAENZ, RAPHAEL	1,822.10
25156	650	11/30/2012	URIQUIDI, MISTI DAWN	644.69
25157	642	11/30/2012	ARNOLD, MALLARY BETH	1,505.70
25158	660	11/30/2012	BROWN, CHARLOTTE L.	1,297.62
25159	611	11/30/2012	DUTTON, LINDA	774.99
25160	656	11/30/2012	HERRERA, SHARLA JAN	1,584.12
25161	620	11/30/2012	JAMES, AMANDA M	349.65
25162	627	11/30/2012	WOLF, VIRGINIA ANN	1,231.86
25163	618	11/30/2012	BUSTAMANTE, YASMEEN	591.50

PROGNOSIS HEALTH INFORMATION SYS.

Requested By: jwillhelm

Page: 5

Date: 12/02/2012	Payroll Check Journal	Page: 6
Time: 15:20:46	WINKLER COUNTY HOSPITAL	py/o_chkjrn
	From 11/01/2012 to 11/30/2012	
=====		
25164	662	11/30/2012 MANCHA, JOSE M. 2,445.06
25165	645	11/30/2012 WIDNER, WILLIAM BRADY 432.84
25166	625	11/30/2012 ACEVEDO, YOBRIELDA 423.29
25167	631	11/30/2012 SERBANTEZ, ANNETTE MARIE 962.71
25168	630	11/30/2012 MILLER, LACOSTA POOL 596.79
25169	654	11/30/2012 DOBSON, CHRISTOPHER 681.92
25170	640	11/30/2012 BARAJAS, OSCAR R. 1,275.63
25171	612	11/30/2012 CARRASCO, NEREIDA 656.45
25172	674	11/30/2012 LARA, LUCERO A. 991.15
25173	619	11/30/2012 MORALES, YARAVY FATIMA 756.55

Check Total: 226		Amount: 227,918.90

=====

PROGNOSIS HEALTH INFORMATION SYS.	Requested By: jwillhelm	Page: 6
-----------------------------------	-------------------------	---------

WINKLER COUNTY EMPLOYEE BENEFIT FUND

NOV BANK TRANSATIONS						
DATE	CHECK NUMBERS	DENTAL	MEDICAL	STOP LOSS	DEPOSITS	BALANCE
11/2/2012					\$ 126,777.25	\$ 137,630.47
11/7/2012	7452		\$ (630.40)			\$ 138,260.87
11/7/2012	7795-7812	\$ 487.00	\$ 28,551.83			\$ 109,222.04
11/14/2012				\$ (52,231.55)		\$ 161,453.59
11/15/2012	BCBS 10/20-11/9/12		\$ 8,919.92			\$ 152,533.67
11/14/2012	7813-7815		\$ 814.77			\$ 151,718.90
11/19/2012	STOP LOSS			\$ (3,917.03)		\$ 155,635.93
11/19/2012	STOP LOSS			\$ (2,947.63)		\$ 158,583.56
11/19/2012	STOP LOSS			\$ (49,931.90)		\$ 208,515.46
11/19/2012	STOP LOSS			\$ (17,746.60)		\$ 226,262.06
11/19/2012	STOP LOSS			\$ (5,988.58)		\$ 232,250.64
11/22/2012	BCBS 11/10-11/16/12		\$ 26,313.85			\$ 205,936.79
11/22/2012	BCBS 10/1/12-10/31/12		\$ 6,890.13			\$ 199,046.66
11/20/2012	7816-7823	\$ 629.80	\$ 1,136.92			\$ 197,279.94
11/28/2012	7824	\$ 77.00				\$ 197,202.94
11/29/2012	CAREMARK REBATE				\$ 5,428.88	\$ 202,631.82
11/30/2012	bcbs 11/17-11/23/12		\$ 9,839.94			\$ 192,791.88
		\$ 1,193.80	\$ 81,836.96	\$ (132,763.29)	\$ 132,206.13	
BALANCE IS \$233,872.81 MORE DEPOSIT MADE IN ERROR TO THE I&S ACCOUNT FIXED 12/1/12						

WINKLER COUNTY HOSPITAL BOND INTEREST

<u>NOVEMBER BANK TRANSACTIONS</u>			CURRENT	DELINQUENT	
11/16/2012 44585-44586	\$	5.00	\$ 14,448.41	\$ 3,033.28	\$184,152.09
11/21/2012 44617-44618			\$ 9,978.26	\$ 122.08	\$194,252.43
11/26/2012 44626-44627			\$ 4,034.66	\$ 26.11	\$198,313.20
	\$	5.00	\$ 28,461.33	\$ 3,181.47	

DEPOSIT OF \$233,872.81 MADE IN ERROR TO THIS ACCOUNT SHOULD BE WC EMPLOYEE BENEFIT FUND CORRECT 12/1/12

A motion was made by Commissioner Wolf and seconded by Commissioner Stevens to appoint Randy Neal, Commissioner, Precinct No. 3, as County Judge Pro-Tem for 2013; which motion became an order of the Court upon the following vote:

Ayes: Commissioners Stevens, Wolf, Neal and Thompson
Noes: None

A motion was made by Commissioner Neal and seconded by Commissioner Thompson to set terms of County Court (Civil, Criminal and Probate) and terms of Justice Court for 2013 as follows:

The County Court of Winkler County shall hold six (6) terms of Court each year; the January-February term to begin on the first (1st) Monday of January; the March-April term to begin on the first (1st) Monday of March; the May-June term to begin on the first (1st) Monday of May; the July-August term to begin on the first (1st) Monday of July; the September-October term to begin on the first (1st) Monday of September; the November-December term to begin on the first (1st) Monday of November, each term of court as to both Civil and Criminal matters shall continue its session to the close of the Saturday before Monday of the opening of said regular term of said Court; that a continuous term be provided for hearing Probate and Juvenile matters; the term of the Justice Court shall be from day to day, week to week and month to month as to both Civil and Criminal matters.

which motion became an order of the Court upon the following vote:

Ayes: Commissioners Stevens, Wolf, Neal and Thompson
Noes: None

A motion was made by Commissioner Stevens and seconded by Commissioner Wolf to approve 2013 Winkler County Golf Course Tournament Schedule; which motion became an order of the Court upon the following vote:

Ayes: Commissioners Stevens, Wolf, Neal and Thompson
Noes: None

**WINKLER COUNTY GOLF COURSE
2013 TOURNAMENTS**

MARCH

18TH & 19TH : WINK HIGH SCHOOL
23RD : **ROTARY 2-PERSON SCRAMBLE** (27 holes)

APRIL

6TH & 7TH : SPRING CUP MATCHES ** does not close course*
27TH : KERMIT JUNIOR HIGH

MAY

11TH & 12TH : **CAP PEDEN 2-MAN LOW-BALL**
25TH & 26TH : **WCGA**

JUNE

8TH & 9TH : **KVFD 3-PERSON SCRAMBLE**

JULY

6TH & 7TH : **BEAUTY AND THE BEAST COUPLES SCRAMBLE**
20TH & 21ST : **WCGA**

AUGUST

3RD & 4TH : **NELL ROSS 4-LADY SCRAMBLE**
17TH & 18TH : FALL CUP MATCHES ** does not close course*

SEPTEMBER

21ST & 22ND : **TRES AMIGOS 3-PERSON SCRAMBLE**

OCTOBER

5TH & 6TH : **WLISD EDUCATION FOUNDATION**

FOR MORE INFORMATION CALL: 432-586-9243

A motion was made by Commissioner Neal and seconded by Commissioner Stevens to approve replacing current Stop Loss Insurance with Companion Life (RH Administrators) with Blue Cross/Blue Shield Stop Loss Insurance effective February 01, 2013; which motion became an order of the Court upon the following vote:

Ayes: Commissioners Stevens, Wolf, Neal and Thompson
Noes: None

A motion was made by Commissioner Neal and seconded by Commissioner Thompson to approve Contract for Tax Billing and Collection Services between Winkler County and the City of Kermit for the period February 01, 2013 to January 31, 2014; which motion became an order of the Court upon the following vote:

Ayes: Commissioners Stevens, Wolf, Neal and Thompson
Noes: None

CONTRACT FOR TAX BILLING AND COLLECTION SERVICES

STATE OF TEXAS

§

COUNTY OF WINKLER

§

This agreement is entered into on the day below between Winkler County, Texas and the below Entity of Winkler County, Texas acting by and through their respective elected officials.

WITNESSETH:

WHEREAS, the parties desire for Winkler County to bill and collect Entity's property taxes through the Tax Assessor-Collector of Winkler County;

WHEREAS, the parties pursuant to the laws of the State of Texas enter into this agreement.

NOW, THEREFORE, in consideration of the mutual promises, the parties agree for the County to collect property taxes for the Entity for the tax year of February 1, 2013 through January 31, 2014, in accordance with all the other terms, provisions and conditions of the Contract for Tax Billing and Collection Services between the parties for the tax year of February 1, 2004 through January 31, 2005, which are applicable to this current Contract.

EXECUTED this the _____ day of _____, 2013.

ATTEST:

WINKLER COUNTY, TEXAS
By Authority of the Commissioners' Court

Shethelia Reed, Winkler County Clerk

By: _____
Bonnie Leck, Winkler County Judge

ATTEST:

ENTITY:

CITY OF KERMIT

Gloria Saenz, Kermit City Secretary

By: _____
Brett Autrey, Mayor, City of Kermit

Patti Franks, Winkler County
Tax Assessor-Collector

A motion was made by Commissioner Neal and seconded by Commissioner Stevens to approve Contract for Tax Billing and Collection Services between Winkler County and the City of Wink for the period of February 01, 2013 to January 31, 2014; which motion became an order of the Court upon the following vote:

Ayes: Commissioners Stevens, Wolf, Neal and Thompson
Noes: None

CONTRACT FOR TAX BILLING AND COLLECTION SERVICES

STATE OF TEXAS

SS: SS: SS:

COUNTY OF WINKLER

This agreement is entered into on the day below between Winkler County, Texas and the below Entity of Winkler County, Texas acting by and through their respective elected officials.

WITNESSETH:

WHEREAS, the parties desire for Winkler County to bill and collect Entity's property taxes through the Tax Assessor-Collector of Winkler County;

WHEREAS, the parties pursuant to the laws of the State of Texas enter into this agreement.

NOW, THEREFORE, in consideration of the mutual promises, the parties agree for the County to collect property taxes for the Entity for the tax year of February 1, 2013 through January 31, 2014, in accordance with all the other terms, provisions and conditions of the Contract for Tax Billing and Collection Services between the parties for the tax year of February 1, 2004 through January 31, 2005, which are applicable to this current Contract.

EXECUTED this the _____ day of _____, 2013.

ATTEST:

WINKLER COUNTY, TEXAS
By Authority of the Commissioners' Court

Shethelia Reed, Winkler County Clerk

By: _____
Bonnie Leck, Winkler County Judge

ATTEST:

ENTITY:
CITY OF WINK

Tonya Todd, Wink City Secretary

By: Greg Rogers, Mayor, City of Wink

Patti Franks, Winkler County
Tax Assessor-Collector

A motion was made by Commissioner Neal and seconded by Commissioner Thompson to approve Contract for Tax Billing and Collection Services between Winkler County and Kermit Independent School District for the period of February 01, 2013 to January 31, 2014; which motion became an order of the Court upon the following vote:

Ayes: Commissioners Stevens, Wolf, Neal and Thompson
Noes: None

CONTRACT FOR TAX BILLING AND COLLECTION SERVICES

STATE OF TEXAS

www.ck12.org

COUNTY OF WINKLER

This agreement is entered into on the day below between Winkler County, Texas and the below Entity of Winkler County, Texas acting by and through their respective elected officials.

WITNESSETH:

WHEREAS, the parties desire for Winkler County to bill and collect Entity's property taxes through the Tax Assessor-Collector of Winkler County;

WHEREAS, the parties pursuant to the laws of the State of Texas enter into this agreement.

NOW, THEREFORE, in consideration of the mutual promises, the parties agree for the County to collect property taxes for the Entity for the tax year of February 1, 2013 through January 31, 2014, in accordance with all the other terms, provisions and conditions of the Contract for Tax Billing and Collection Services between the parties for the tax year of February 1, 2005 through January 31, 2006, which are applicable to this current Contract.

EXECUTED this the _____ day of _____, 2013.

ATTEST:

WINKLER COUNTY, TEXAS

By Authority of the Commissioners' Court

Shethelia Reed, Winkler County Clerk

By: Bonnie Leck, Winkler County Judge

ATTEST:

ENTITY:

KERMIT INDEPENDENT SCHOOL DISTRICT

Lee Lentz-Edwards, Secretary of
Board of Trustees

By: _____
Odie Marshall, President of Board of Trustees

Patti Franks, Winkler County
Tax Assessor-Collector

A motion was made by Commissioner Thompson and seconded by Commissioner Neal to appoint Lois Ferguson as Precinct No. 1 member and Dovie Abron as Precinct No. 4 member to the Senior Citizens Advisory Board for January 01, 2013 to December 31, 2014; which motion became an order of the Court upon the following vote:

Ayes: Commissioners Stevens, Wolf, Neal and Thompson
Noes: None

A motion was made by Commissioner Neal and seconded by Commissioner Stevens to appoint Ronald Hawley as Precinct No. 1 member and Layne Nutt as Precinct No. 3 member to the Golf Course Advisory Board for January 01, 2013 to December 31, 2014; which motion became an order of the Court upon the following vote:

Ayes: Commissioners Stevens, Wolf, Neal and Thompson
Noes: None

A motion was made by Commissioner Neal and seconded by Commissioner Thompson to appoint the following people as members to Winkler County Historical Commission for January 01, 2013 to December 31, 2014:

Pat Wight, W. J. Mitchell, Larry Fernandez, John Walton,

Kenneth Edwards, Vicki Pigmon, Carolyn Harrison,
Pam Rogers, Greg Rogers, Betty Edwards, Karen Stone,
Bill Waddell, Barbara Waddell, Ted Westmoreland,
Janet Marler, Eva Mitchell and Dorothy Parker

which motion became an order of the Court upon the following vote:

Ayes: Commissioner Stevens, Wolf, Neal and Thompson
Noes: None

A motion was made by Commissioner Neal and seconded by Commissioner Thompson to table appointment of Winkler County Fire Marshal; which motion became an order of the Court upon the following vote:

Ayes: Commissioners Stevens, Wolf, Neal and Thompson
Noes: None

A motion was made by Commissioner Neal and seconded by Commissioner Thompson to appoint Shethelia Reed, County Clerk, as Registrar and Pam Greene, Chief Deputy, as Assistant Registrar; which motion became an order of the Court upon the following vote:

Ayes: Commissioners Stevens, Wolf, Neal and Thompson
Noes: None

A motion was made by Commissioner Neal and seconded by Commissioner Thompson to appoint Bonnie Leck, County Judge, as representative to the Permian Basin Regional Planning Commissioner for 2013; which motion became an order of the Court upon the following vote:

Ayes: Commissioners Stevens, Wolf, Neal and Thompson
Noes: None

A motion was made by Commissioner Neal and seconded by Commissioner Thompson to appoint the following subordinate officers:

Laurie Shropshire	Librarian (Kermit)
Pauline Kline	Assistant Librarian (Wink)
Naomi Soltero	County Indigent Health Officer
Robin Hawkins	Meals Program Director
Wannah Hartley	Hospital Liaison Officer
Mark Terry	County Maintenance Engineer
Chase Settle	Extension Agent of Agriculture
Jerry Rogers	Veterans Service Coordinator
Robin Hawkins	Senior Citizens Recreation Center Director
Geneva Baker	Human Resources Director

which motion became an order of the Court upon the following vote:

Ayes: Commissioners Stevens, Wolf, Neal and Thompson
Noes: None

A motion was made by Commissioner Neal and seconded by Commissioner Wolf to appoint Stephen Taliaferro as representative to Technology Committee; which motion became an order of the Court upon the following vote:

Ayes: Commissioners Stevens, Wolf, Neal and Thompson

Noes: None

A motion was made by Commissioner Neal and seconded by Commissioner Thompson to appoint Billy Stevens and Michelle Rushing as representatives to Employee Handbook Review Committee to fill vacancies; which motion became an order of the Court upon the following vote:

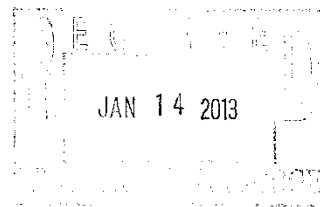
Ayes: Commissioners Stevens, Wolf, Neal and Thompson
Noes: None

A motion was made by Commissioner Neal and seconded by Commissioner Stevens to approve Grant Agreement between Winkler County and the Texas Department of Agriculture for Texans Feeding Texans: Home-Delivered Meal Grant Program for the term of February 01, 2013 through January 31, 2014; which motion became an order of the Court upon the following vote:

Ayes: Commissioners Stevens, Wolf, Neal and Thompson
Noes: None

TEXAS DEPARTMENT OF AGRICULTURE

TODD STAPLES
COMMISSIONER



Date: January 4, 2013

To: 2013 Home Delivered Meal Provider

From: Karen Reichel, Grants Coordinator *KR*

Re: Texans Feeding Texans: Home-Delivered Meal Grant Program Agreement

The Texas Department of Agriculture (TDA) is pleased to inform you that your 2013 application to the Texans Feeding Texans: Home-Delivered Meal Grant Program has been approved. Acceptance of this grant is conditional upon the completion and return of the enclosed Grant Agreement ("Agreement").

Carefully review the Agreement to determine whether your agency can meet the conditions. The Agreement includes a budget form that must also be completed and returned. The budget should indicate how the organization intends to expend the 2013 grant funds. While we urge you to represent your budget as accurately as possible, there are mechanisms described in the agreement, Section IX, 9.5, to revise the budget during the grant year, if necessary. Please note that the grant award will be distributed in two installments; once in February and the remaining funds in August.

Grant funds must be used to directly supplement or extend existing meal services to homebound persons that are elderly and/or have a disability. Grant funds may not be used for the purchase of capital assets, which would include any equipment valued at \$5,000 or more. In order for TDA to monitor the expenditure of grant funds, you will be required to provide Quarterly Grant Spending Reports. It is important to know that the Quarterly Reports will require you to detail how TDA grant funds are spent.

Please sign Agreement and attachments and return ALL DOCUMENTS by close of business, January 22, 2013.

Physical Address:
Ms. Mindy Fryer, Grants Specialist
Texas Department of Agriculture
1700 North Congress Avenue
Austin, Texas 78701

Mailing Address:
Ms. Mindy Fryer, Grants Specialist
Texas Department of Agriculture
P.O. Box 12847
Austin, Texas 78711

A copy of the fully executed Agreement will then be returned to you for your records. If TDA does not receive your signed Agreement by the due date, your initial grant payment will be delayed.

If you have any questions please contact Ms. Mindy Fryer at (512) 463-6908 or by email at Grants@TexasAgriculture.gov.



P.O. Box 12847 Austin, Texas 78711 (512) 463-7476 Fax: (888) 223-8861

www.TexasAgriculture.gov

GRANT AGREEMENT

Grantor: Texas Department of Agriculture
P.O. Box 12847
Austin, Texas 78711

Grantee: County of Winkler
100 East Winkler
Kermit, Texas, 79745

Grant Program: Texans Feeding Texans: Home-Delivered Meal Grant Program

Grant Award: \$6,183.44

Term of Agreement: February 1, 2013 through January 31, 2014

Grant Number: HDM-13-1004

**Article 1
Recitals**

- 1.1 **WHEREAS**, Grantor has established the Texans Feeding Texans: Home-Delivered Meal Grant Program ("Program") to distribute grant funds to eligible organizations that provide home-delivered meals to homebound persons who are elderly and/or have a disability; and
- 1.2 **WHEREAS**, Grantee has applied for a grant from the Program and has met all requirements for receiving the Grant.
- 1.3 **NOW, THEREFORE**, in consideration of the mutual promises and consideration contained herein, the receipt and sufficiency of which are hereby acknowledged, the parties agree as follows:

**Article 2
Program Purpose and Grant Defined**

- 2.1 In accordance with Section 12.042 of the Texas Agriculture Code, funds have been appropriated to the Grantor to help defray the costs of providing home-delivered meals that are not fully funded by the Department of Aging and Disability Services or an area agency on aging.
- 2.2 **"Agreement"** means this Grant Agreement and all attachments hereto.
- 2.3 **"Department"** – The Texas Department of Agriculture.
- 2.4 **"Disability"** means a physical, mental or developmental impairment, temporarily or permanently limiting an individual's capacity to adequately perform one or more essential activities of daily living, which include, but are not limited to, personal and health care, moving around, communicating, and housekeeping.
- 2.5 **"Elderly"** means an individual who is 60 years of age or older.
- 2.6 **"Grant"** means the funds awarded to Grantee by Grantor, subject to the requirements of this Agreement, Texas Administrative Code Title 4, Part 1, Sections 1.950 et seq. and other Program requirements, in the amount of \$6,183.44 to be used in Winkler County.
- 2.7 **"Homebound"** means a person who is unable to leave his or her residence without aid or assistance or whose ability to travel from his or her residence is substantially impaired.
- 2.8 **Grantee:** County of Winkler, 100 East Winkler, Kermit, Texas, 79745.
- 2.9 **Grantor:** Texas Department of Agriculture.
- 2.10 **Grant Program:** Texans Feeding Texans: Home-Delivered Meal Grant Program.
- 2.11 **Grant Number:** HDM-13-1004
- 2.12 **Term of Agreement:** February 1, 2013 through January 31, 2014.

Article 3
Grantor and Grantee Obligations

- 3.1 Award by Grantor.** Subject to the provisions of this Agreement and Texas Administrative Code Title 4, Part 1, Sections 1.950 et seq., Grantor hereby awards to Grantee the Grant, which Grantee shall use only to supplement and extend existing services related directly to the delivery of meals to Homebound persons that are Elderly and/or have a Disability.
- 3.2 Payment Schedule.** The Grantor shall make a grant award not later than February 1 to Grantee. Fifty percent (50%) of grant funds awarded shall be allocated and distributed to Grantee on or before February 1. The remaining fifty percent (50%) of such grant award shall be allocated and distributed to Grantee on or before August 1. Notwithstanding any other provision of this subchapter, the Department may deny, revoke, suspend, or withhold a grant award for misuse of grant funds, or failure to comply with any requirement of Texas Administrative Code Title 4, Part 1, Chapter 1, Subchapter O, Sections 1.950 et seq.
- 3.3 Performance by Grantee.** Grantee shall use Grant in accordance with the terms of this Agreement and Texas Administrative Code Title 4, Part 1, Chapter 1, Subchapter O, Sections 1.950 et seq.
- 3.4 Non-expended Grant Funds.** Grantee understands and acknowledges that grant funds that are not expended by Grantee prior to the end of the Term of Agreement, including any authorized extensions, must be returned to the Grantor. Failure to remit unused funds may result in legal action against Grantee, including, without limitation, making Grantee in eligible for future Program funds.
- 3.5 Grantee's Menu and Substitution Procedure.** Grantee shall have all menus and meal substitution procedures approved by a registered dietician or a person with a bachelor's degree (or higher) in food and nutrition, dietetics, or food service management, who is currently employed as a dietitian or dietary consultant in a hospital, nursing facility, school, home-delivered meal organization, or in private practice. Grantee shall maintain documentation of such approval.
- 3.6 Grantee Meal Delivery and Temperature Standards and Procedures.** Grantee shall maintain policies to ensure compliance with meal temperature standards and the Program's four-hour delivery requirement at each meal preparation location. Grantee shall also maintain records demonstrating compliance with Grantee's policies. If Grantee does not comply with meal temperature standards and the four-hour delivery requirement due to exceptional circumstances, the Grantee should seek a written waiver from Grantor as soon as practicable following the occurrence of the exceptional event or circumstances. If Grantee fails to comply with the Program's four-hour delivery requirement, Grantee will be required to implement corrective action, as determined by TDA, prior to applying for future funds.
- 3.7 Failure to Obtain a Food Establishment Permit or Comply with Texas Food Establishment Rules (TFER).** If it is determined that Grantee failed to obtain a required food establishment permit, or that Grantee failed to comply with TFER, Grantor, at its sole discretion, may exercise the remedies set forth in sections 6.1 and 7.1 of this Agreement, including, without limitation, termination of the Agreement and taking legal action to obtain full repayment of the Grant.

Article 4 Reporting Requirements

- 4.1 Budget.** Grantee shall provide a detailed budget for the year, attached hereto as "Attachment A", not to exceed \$6,183.44 for the Term of the Agreement, signed by the Grantee, using the budget categories by which Grantee shall be submitting Quarterly Report information.
- 4.2 Quarterly Report.** Grantee shall provide to Grantor a quarterly report in a format prescribed by Grantor. The report must track the expenditure of Grant funds in sufficient detail to assure compliance with Program rules. Report due dates are as follows:
- **June 1, 2013** for the period February 1, 2013 – April 30, 2013.
 - **September 1, 2013** for the period May 1, 2013 – July 31, 2013.
 - **December 1, 2013** for the period August 1, 2013 – October 31, 2013.
 - **March 1, 2014** for the period November 1, 2013 – January 31, 2014.
- 4.3 Failure to Comply with Reporting Requirements.** Failure of Grantee to comply with any of the reporting requirements in this Agreement may result in the withholding or revocation of a Grant, requirement for Grantee to refund Grant funds disbursed, and/or Grantee's ineligibility for future Program funds.
- 4.4 Notice of Failure to Receive County Grant.** Grantee shall promptly notify the Grantor of any failure to receive or reduction in the amount of the county grant funds required by Texas Administrative Code Title 4, Part 1, Chapter 1, Subchapter O, Section 1.953 as reported by Grantee in its application for funds under this Program. Failure of Grantee to receive, or reduction in the amount of, county grant funds may result in the withholding or revocation of a Grant or require Grantee to refund Grant funds disbursed.
- 4.5 Eligible Meals.** The Grant is based on the number of Eligible Meals served by County of Winkler. Eligible Meals are calculated by subtracting the meals funded by the Texas Department of Aging and Disabilities and/or Area Agency on Aging, 13,344, from the total number of meals delivered as reported by County of Winkler in Winkler County between September 1, 2011 and August 31, 2012, 28,344. The Grant is calculated on the remaining number, or 15,000 meals. For purposes of this Grant, any meals that are not Eligible Meals are classified as Ineligible Meals. If an audit or review of the Grant reveals that Grantee has received Grant funds based on Ineligible Meals, Grantee will be required to repay Grantor the amount of the excess Grant funds received, on terms and conditions as may be set by Grantor.

Article 5 Recordkeeping, Access, Inspections, Audits and Investigations

- 5.1 Access to Records.** During the Term of Agreement and for at least three years after termination of the Agreement, Grantee shall allow representatives of Grantor and/or the State Auditor's Office upon request by such, access to and the right to examine the premises, books, accounts, records, files and other papers or property belonging to or in use by Grantee and pertaining to the Agreement. Such records shall be maintained by Grantee at a location that is readily accessible to Grantor and/or the State Auditor's Office. Further,

Grantor and/or the State Auditor's Office have the authority to monitor Grantee's work and make a visual inspection of any assets purchased or constructed with grant funds.

- 5.2 Authority to Audit and Investigate.** Grantee understands that acceptance of grant funds under the Agreement acts as acceptance of the authority of the State Auditor's Office, its successor agency, and any representative of the Grantor to conduct an audit or investigation in connection with such funds. Grantee further agrees to cooperate fully with the State Auditor's Office, its successor or any representative of the Grantor in the conduct of the audit or investigation, including providing all records requested and providing the State Auditor or any representative of the Grantor with access to any information they consider relevant to the investigation or audit. Grantee shall ensure that the clause concerning the authority to audit funds received indirectly by any subcontractors used by Grantee and their requirement to cooperate is included in any subcontracted awards.
- 5.3 Disallowance of Grant Funds.** Grantee understands and agrees that Grantee shall be liable to the Grantor for any costs disallowed as a result of any audit, investigation or review.

Article 6 Use of Grant Funds

- 6.1 Allowable Expenditures.** Allowable expenditures include, but are not limited to, food costs and related preparation and packaging expenses, gasoline, costs for obtaining any required food establishment permit from the applicable governmental entity or permitting authority, costs for obtaining an inspection report from a kitchen food sanitation expert, if applicable, and other operational costs, but shall not be used for the purchase of capital assets. Grant funds shall not be used for expenditures that are not made in compliance with any applicable State purchasing laws and regulations. Grantee shall not, under any circumstances, use grant funds for alcoholic beverages, entertainment or charitable or political contributions. If requested by Grantor, Grantee must be able to produce proof of payment (stamped paid invoices or receipts) of all allowable expenditures.
- 6.2 Misuse of Grant Funds.** Grantor may require a full or partial refund of the Grant if: (a) Grant funds are misused, (b) Grants funds are used for Ineligible Meals; (c) Grant funds are used in an illegal manner, (d) Grant funds are used for non-allowable expenses, (e) Grantee violates the terms and conditions of this Agreement, or (f) Grantee made any misrepresentations to Grantor in obtaining this Grant. This provision is not exclusive of other grounds for withholding or recouping of funds or any other remedy, civil or criminal, which may be available to Grantor.
- 6.3 No Duplication of Services.** Grant funds shall not be used to duplicate services provided to Grantee's clients. Grantee shall have a system in place to prevent the duplication of services to Grantee's clients.
- 6.4 Availability of State Funds.** This Agreement is subject to the availability of state funds. If such funds become unavailable during the Term of Agreement and Grantor is unable to obtain sufficient funds, this Agreement shall be reduced or terminated.
- 6.5 Grantee in "Good Standing."** Grantee understands that in order to be eligible for payment from Grantor, Grantee shall be in "good standing" with the Texas Comptroller of Public Accounts.

Article 7
Term and Termination of the Agreement

- 7.1 Term and Termination.** The Agreement may be terminated at any time by mutual consent. In addition, either party may terminate the Agreement, without cause, upon thirty days written notice via registered or certified mail, return receipt requested, to the other party. Early termination of the Agreement shall not relieve Grantee from the reporting requirements contained in Articles 4, 5 and 6 of this Agreement. If one party terminates the Agreement, pursuant to this section, then the effective date of termination is 30 days from the date that the non-terminating party receives the notice of termination.
- 7.2 No Reimbursement Upon Termination.** In the event of termination of this Agreement, Grantor shall make no further disbursement of Grant funds to Grantee beyond those already approved at the time of termination, and Grantee specifically waives all rights to any such funds.

Article 8
Use and Disposition of Property

- 8.1 Use of Property.** During the Term of Agreement, any property acquired with Grant funds shall be used in accordance with this Agreement, to accomplish the purposes of the Program.
- 8.2 Records of Property.** Grantee shall maintain appropriate records of goods or property purchased with Grant funds and shall develop a control system to ensure adequate safeguards to prevent loss, damage, or theft of such goods or property.

Article 9
Agreement Modifications

- 9.1 Amending Agreement.** Except as provided in paragraph 9.6 below, this Agreement embodies the entire agreement between the parties, and there are no covenants, agreements, representations, warranties or restrictions between the parties other than those specifically set forth herein. Except as provided in paragraph 9.2 below, no modification or amendment to this Agreement is valid unless in writing and signed by the parties.
- 9.2 Notification of Change in Grantee's Address.** Grantee must notify Grantor in writing within 30 days if Grantee's address changes during the Term of Agreement. Failure to submit required notice may be grounds for termination of this Agreement.
- 9.3 Grantor Request for Amendment.** Grantor may amend this Agreement by submitting the requested change to Grantee in writing. Continued performance hereunder shall be deemed acceptance of such Amendment by Grantee.
- 9.4 Grantee Request for Amendment.** Grantee may request an amendment to the Agreement by submitting the requested change, in writing, to Grantor. All requests for an amendment to the Agreement must include a summary of Grantee's home-delivered meal services and a statement explaining the need for the change.
- 9.5 Budgetary Revisions.** The Grantee may make a one-time budget revision (not affecting the overall budget amount) without prior approval during the program year, so long as the

revision does not require an increase or decrease in any budget line item over 10% of the item's approved budget. All other budget revisions require prior written approval. The grantee shall request written approval for a budget change by submitting a statement explaining the need for the change, specifying the amount, and identifying the expenditure categories affected by the change on a form prescribed by the Grantor.

- 9.6 Approved Changes Become Part of Agreement.** Once approved in accordance with the article, approved changes become a part of the Agreement, superseding all provisions that are inconsistent herein.

Article 10

General Terms and Conditions

- 10.1 Delegation to Third-Party.** Grantee is not relieved of its duties and obligations imposed by this Agreement through delegation by Grantee to a third-party.
- 10.2 Agreement Binding.** The Agreement shall be binding on and inure to the benefit of the parties and their officers, administrators, legal representatives, and successors except as otherwise expressly provided herein. Grantee may not assign or transfer this Agreement without the written consent of Grantor. The parties intend to be legally bound and have executed this Agreement as evidenced by their signatures on the date indicated below. This Agreement is not effective unless and until it has been signed by both parties.
- 10.3 Agreement does not Create Debt.** This Agreement shall not be construed as creating any debt on behalf of the State of Texas, and/or Grantor in violation of Article III, Section 49, of the Texas Constitution. In compliance with Article VIII, Section 6, of the Texas Constitution, all obligations of the State of Texas or Grantor hereunder are subject to the availability of appropriations and authorization to pay by the Texas Legislature.
- 10.4 Delivery Methods.** Unless specifically provided herein, any notice, tender, or delivery to be given hereunder by any party to another party must be affected by personal delivery in writing or by mailing the same by registered or certified mail, return receipt requested. All notices shall be addressed to the parties at the address stated in the Agreement unless a change of address has been given in the manner provided for in this paragraph.
- 10.5 Authorized Representative.** Each person signing expressly represents that he or she is duly authorized to do so and to bind the party on whose behalf they are signing. All legal documents prepared for Grantee's signature must be executed by an individual with the authority to legally bind Grantee.
- 10.6 Indemnification.** Grantee shall indemnify and hold harmless Grantor, its agents and employees, from any and all claims, demands, and causes of action arising from or related to Grantee's performance under this Agreement, including reasonable attorneys' fees incurred in defending or settling any such claims to the extent allowed by law.
- 10.7 Grantee Not Employee of Grantor.** Grantee, its employees, contractors, and/or subcontractors shall not present themselves as or be construed as employees or agents of Grantor. Neither Grantee nor its employees have an employer-employee relationship with Grantor.

- 10.8 Representations and Warranties of Grantee.** Grantee represents and warrants that: it has the full right and authority to enter into the Agreement and to bestow on Grantor the rights and privileges set forth in the Agreement; it has obtained all necessary approvals prior to execution of the Agreement; it is in good standing with the Texas Comptroller of Public Accounts, and in all other jurisdictions in which it is required to be so qualified for performance of the Agreement; and it has paid all necessary fees, and it has obtained all necessary certifications, registrations, approvals and licenses necessary to perform the Agreement.
- 10.9 Applicable Law.** The Agreement shall be governed by and construed in accordance with the laws of the State of Texas. Exclusive venue shall lie in the District Courts of Travis County, Texas.
- 10.10 Headings.** Captions and headings of the sections or paragraphs of the Agreement are for convenience and reference only and shall not affect, modify or amplify the provisions of the Agreement, nor shall they be employed to interpret or aid in the construction of the Agreement.
- 10.11 Severability.** If any part of the Agreement is declared by a court of competent jurisdiction to be invalid or unenforceable, such portion shall be deemed severed from the Agreement and the remaining part shall remain in full force and effect, and the parties shall promptly negotiate to replace invalid or unenforceable provisions that are essential parts of the Agreement.
- 10.12 Waiver.** A waiver by Grantor of any provision hereunder shall not operate as a waiver of any other provision, or continuing waiver of the same provision in the future.
- 10.13 Construction of Agreement.** Both parties hereby agree that they participated in the creation of this Agreement, and the terms hereof are a product of the negotiation between the parties. In the event there is a dispute regarding the meaning of any provision of this Agreement, no provision shall be construed in favor of or against any party's position on the grounds that said Party was the drafter of this Agreement.
- 10.14 Exhibits.** The following instruments are incorporated into this Agreement as attachments:
- Attachment A – Grant Budget
 - Attachment B – W-9 Form
- 10.15 Uniform Grant Management Standards (UGMS).** In accordance with Texas Government Code §783.007, this Agreement shall comply in all respects with the Uniform Grant Management Standards (UGMS). In the case of any conflicts between UGMS and this Agreement, the UGMS shall control.

Article 11
Texas Public Information Act Notice

All information provided by Grantee pursuant to the Agreement, including information and material referred to in paragraph 5.1 of the Agreement, is subject to the Texas Public Information Act, Texas Government Code, Chapter 552, and may be subject to disclosure to the public.

This Agreement is executed by the Parties in their capacities as stated below.

Accepted and Agreed:

Grantor:
Texas Department of Agriculture
P.O. Box 12847
Austin, Texas 78711

Drew DeBerry, Deputy Commissioner

Date: _____

Grantee:
County of Winkler
100 East Winkler
Kermit, Texas 79745

Authorized Official Signature

Date: _____

Printed Name and Title

ATTACHMENT A
HOME DELIVERED MEAL GRANT BUDGET

Name of grantee: **County of Winkler** TDA Application No.: **HDM-13-1004**
County in which meals are provided: **Winkler**
Total grant amount: **\$6,183.44**

COMPLETE THE TABLE BELOW. Please estimate, to the best of your ability, how Texans Feeding Texas: Home Delivered Meal Grant Program funds will be expended for your organization during the grant period.

<i>Expenditure Category</i>	<i>Estimated Amount</i>
Personnel	\$
Food/Mcals	\$
Equipment	\$
Building Occupancy	\$
Transportation	\$
Office Supplies and Services	\$
Other: Please specify exactly	\$
a.	\$
b.	\$
c.	\$
d.	\$
Total Grant Amount	\$6,183.44

During the Grant Year, Grantee must demonstrate that TDA grant funds were used to directly supplement or extend existing meal services to homebound persons that are elderly and/or have a disability.

By signing, I certify that the information entered on this form is true and correct to the best of my knowledge.

Signature: _____ Date: _____

Form
(Rev. December 2011)
Department of the Treasury
Internal Revenue Service

W-9

Request for Taxpayer
Identification Number and Certification

Give Form to the
requester. Do not
send to the IRS.

Print or type
See Specific Instructions on page 2.

Name (as shown on your income tax return)

Business name/disregarded entity name, if different from above

Check appropriate box for federal tax classification:

☐ Individual/sole proprietor ☐ C Corporation ☐ S Corporation ☐ Partnership ☐ Trust/estate

☐ Limited liability company. Enter the tax classification (C=C corporation, S=S corporation, P=partnership) ▶

☐ Other (see instructions) ▶

Address (number, street, and apt. or suite no.)

City, state, and ZIP code

List account number(s) here (optional)

Requester's name and address (optional)

☐ Exempt payee

Part I Taxpayer Identification Number (TIN)

Enter your TIN in the appropriate box. The TIN provided must match the name given on the "Name" line to avoid backup withholding. For individuals, this is your social security number (SSN). However, for a resident alien, sole proprietor, or disregarded entity, see the Part I instructions on page 3. For other entities, it is your employer identification number (EIN). If you do not have a number, see *How to get a TIN* on page 3.
Note. If the account is in more than one name, see the chart on page 4 for guidelines on whose number to enter.

Social security number

Employer identification number

Part II Certification

Under penalties of perjury, I certify that:
1. The number shown on this form is my correct taxpayer identification number (or I am waiting for a number to be issued to me), and
2. I am not subject to backup withholding because: (a) I am exempt from backup withholding, or (b) I have not been notified by the Internal Revenue Service (IRS) that I am subject to backup withholding as a result of a failure to report all interest or dividends, or (c) the IRS has notified me that I am no longer subject to backup withholding, and
3. I am a U.S. citizen or other U.S. person (defined below).
Certification instructions. You must cross out item 2 above if you have been notified by the IRS that you are currently subject to backup withholding because you have failed to report all interest and dividends on your tax return. For real estate transactions, item 2 does not apply. For mortgage interest paid, acquisition or abandonment of secured property, cancellation of debt, contributions to an individual retirement arrangement (IRA), and generally, payments other than interest and dividends, you are not required to sign the certification, but you must provide your correct TIN. See the instructions on page 4.

Sign Here

Signature of U.S. person ▶

Date ▶

General Instructions

Section references are to the Internal Revenue Code unless otherwise noted.
Purpose of Form
A person who is required to file an information return with the IRS must obtain your correct taxpayer identification number (TIN) to report, for example, income paid to you, real estate transactions, mortgage interest you paid, acquisition or abandonment of secured property, cancellation of debt, or contributions you made to an IRA.
Use Form W-9 only if you are a U.S. person (including a resident alien), to provide your correct TIN to the person requesting it (the requester) and, when applicable, to:
1. Certify that the TIN you are giving is correct (or you are waiting for a number to be issued),
2. Certify that you are not subject to backup withholding, or
3. Claim exemption from backup withholding if you are a U.S. exempt payee. If applicable, you are also certifying that as a U.S. person, your allocable share of any partnership income from a U.S. trade or business is not subject to the withholding tax on foreign partners' share of effectively connected income.

Note. If a requester gives you a form other than Form W-9 to request your TIN, you must use the requester's form if it is substantially similar to this Form W-9.
Definition of a U.S. person. For federal tax purposes, you are considered a U.S. person if you are:
• An individual who is a U.S. citizen or U.S. resident alien,
• A partnership, corporation, company, or association created or organized in the United States or under the laws of the United States,
• An estate (other than a foreign estate), or
• A domestic trust (as defined in Regulations section 301.7701-7).
Special rules for partnerships. Partnerships that conduct a trade or business in the United States are generally required to pay a withholding tax on any foreign partners' share of income from such business. Further, in certain cases where a Form W-9 has not been received, a partnership is required to presume that a partner is a foreign person, and pay the withholding tax. Therefore, if you are a U.S. person that is a partner in a partnership conducting a trade or business in the United States, provide Form W-9 to the partnership to establish your U.S. status and avoid withholding on your share of partnership income.

Cat. No. 10231X

Form W-9 (Rev. 12-2011)

A motion was made by Commissioner Thompson and seconded by Commissioner Neal to approve request of Senior Citizens Recreation Center Director to hire meal program aide to fill vacancy; which motion became an order of the Court upon the following vote:

Ayes: Commissioners Stevens, Wolf, Neal and Thompson
Noes: None

Following discussion regarding request of Commissioner, Precinct No. 2, to advertise for bids for 2013 Self Propelled Articulating Boom Lift (County-wide equipment), a motion was made by Commissioner Neal and seconded by Commissioner Thompson to authorize the County Auditor to advertise for bids for 2013 Self Propelled Articulating Boom Lift (County-wide equipment); said bids to be received until 10:00 o'clock A.M. on Monday, February 25, 2013, with the Commissioners' Court reserving the right to reject any and all bids ; which motion became an order of the Court upon the following vote:

Ayes: Commissioners Stevens, Wolf, Neal and Thompson
Noes: None

A motion was made by Commissioner Thompson and seconded by Commissioner Neal to approve request of County Attorney to purchase poster printer equipment in the approximate amount of \$5,000.00 for preparation of hearing and trial exhibits from Pretrial Intervention funds; which motion became an order of the Court upon the following vote:

Ayes: Commissioners Stevens, Wolf, Neal and Thompson
Noes: None

A motion was made by Commissioner Neal and seconded by Commissioner Stevens to approve purchase of tracks for Winkler County Emergency Medical Service buggy in the amount of \$12,317.00 from budgeted capital expenditure funds; which motion became an order of the Court upon the following vote:

Ayes: Commissioners Stevens, Wolf, Neal and Thompson
Noes: None

A motion was made by Commissioner Stevens and seconded by Commissioner Neal to approve request of Commissioner, Precinct No. 1 to purchase Cushman Truckster in the amount of \$17,500.00 and Jacobsen Quick Aerator for \$5,100.00 for Winkler County Golf Course from budgeted capital expenditure funds; which motion became an order of the Court upon the following vote:

Ayes: Commissioners Stevens, Wolf, Neal and Thompson
Noes: None

A motion was made by Commissioner Thompson and seconded by Commissioner Neal to approve payment in the amount of \$25,480.00 to Kermit Motor Company, Inc. for 2013 Ford Econoline Wagon for Winkler County Senior Citizens Recreation Center from budgeted capital expenditure funds; which motion became an order of the Court upon the following vote:

Ayes: Commissioners Stevens, Wolf, Neal and Thompson
Noes: None

A motion was made by Commissioner Thompson and seconded by Commissioner Neal to approve transfer of 1998 Ford 15 Passenger Van, VIN 1FBSS31L72HA66976 from Winkler County Senior Citizens Recreation Center to Winkler County Memorial Hospital; which motion became an order of the Court upon the following vote:

Ayes: Commissioners Stevens, Wolf, Neal and Thompson
Noes: None

A motion was made by Commissioner Thompson and seconded by Commissioner Neal to approve payment in the amount of \$25,200.00 to Kermit Motor Company, Inc. for 2013 Ford F150 Supercrew for Precinct No. 4 from budgeted capital expenditure funds; which motion became an order of the Court upon the following vote:

Ayes: Commissioners Stevens, Wolf, Neal and Thompson
Noes: None

A motion was made by Commissioner Thompson and seconded by Commissioner Neal to approve payment in the amount of \$29,100.00 to Kermit Motor Company, Inc. for 2013 Ford Explorer Police Utility for Winkler County

Sheriff's Office from budgeted capital expenditure funds; which motion became an order of the Court upon the following vote:

Ayes: Commissioners Stevens, Wolf, Neal and Thompson
Noes: None

A motion was made by Commissioner Thompson and seconded by Commissioner Neal to approve payment in the amount of \$24,780.00 to Kermit Motor Company, Inc. for 2013 Ford F150 for Winkler County Sheriff's Office from budgeted capital expenditure funds; which motion became an order of the Court upon the following vote:

Ayes: Commissioners Stevens, Wolf, Neal and Thompson
Noes: None

A motion was made by Commissioner Wolf and seconded by Commissioner Thompson to approve hospital bond payment in the amount of \$603,361.88 to The Bank of New York Mellon from budgeted funds; which motion became an order of the Court upon the following vote:

Ayes: Commissioners Stevens, Wolf, Neal and Thompson
Noes: None

A motion was made by Commissioner Neal and seconded by Commissioner Thompson to approve payment in the amount of \$3,403.00 to Jerry L. Phillips, Agent, State Farm Fire and Casualty Company for blanket bonds and elected and appointed officials bonds from budgeted funds; which motion became an order of the Court upon the following vote:

Ayes: Commissioners Stevens, Wolf, Neal and Thompson
Noes: None

A motion was made by Commissioner Neal and seconded by Commissioner Thompson to approve blanket bonds as follows:

1. Winkler County Sheriff's Office for the period of January 01, 2013 until cancelled in the amount of \$5,000.00; and
2. Winkler County Tax Assessor-Collector's Office for the period of January 01, 2013 until cancelled in the amount of \$25,000.00

which motion became an order of the Court upon the following vote:

Ayes: Commissioners Stevens, Wolf, Neal and Thompson
Noes: None

A motion was made by Commissioner Neal and seconded by Commissioner Thompson to approve payment in the amount of \$100.00 to Jerry L. Phillips, Agent, State Farm Fire and Casualty Company for bonds from budgeted funds and approve bonds for the following employees:

1. Eric DeAnda, Chief Adult Probation Officer for the period of January 03, 2013 to January 03, 2014; and
2. Kimberly Deann Nelson, Clerk for Justice of the

Peace, Precinct No. 1, for the term of January 02,
2013 to January 01, 2015

which motion became an order of the Court upon the following vote:

Ayes: Commissioners Stevens, Wolf, Neal and Thompson
Noes: None

A motion was made by Commissioner Neal and seconded by Commissioner Thompson to approve disbursement of funds in the amount of \$1,000.00 to Upper Pecos Soil and Water Conservation District Number 213 from budgeted funds; which motion became an order of the Court upon the following vote:

Ayes: Commissioners Stevens, Wolf, Neal and Thompson
Noes: None

A motion was made by Commissioner Neal and seconded by Commissioner Stevens to approve delaying bid opening for sale of Sandhills Park area from January 28, 2013 to February 25, 2013; which motion became an order of the Court upon the following vote:

Ayes: Commissioners Stevens, Wolf, Neal and Thompson
Noes: None

Following review of Commissioners' responsibilities, a motion was made by Commissioner Neal and seconded by Commissioner Thompson to approve the following Commissioner's responsibilities:

COMMISSIONERS COURT RESPONSIBILITIES
(Revised January 14, 2013)

BILLY STEVENS COMMISSIONER #1	ROBBIE WOLF COMMISSIONER #2	BONNIE LECK COUNTY JUDGE	RANDY NEAL COMMISSIONER #3	BILLY RAY THOMPSON COMMISSIONER #4
Area 1 Road & Bridge Lateral Road Liaison - Area 1 Road Gang Golf Course	Kermit Barn Area Wide Equipment Wink Softball Fields Wink Community Center Wink Substation Wink Expo Building Wink Swimming Pool Wink Parks/Baseball Parks Wink Library Wink Fire Department Area 2 Road & Bridge Christmas Decorations-Wink Lateral Road Liaison - Area 2 Road Gang	Agriculture Indigent Medical & Funeral Dependent Child Care County Court Kermit Fire Department Veteran's Officer Meals Program EMS Purchases/1st Responders Appraisal District Security Guard-Wink Employee Enrichment Christmas Decorations - Kermit County Wide Maintenance Engineer County Judge Hospital Support MHMR Participation	Kermit Swimming Pools Kermit Parks: Boy Scout Grounds Midget League Park Baseball Park Pioneer Park Fleetwood Area BBQ Barn Recreation Center Airport Vest Park Overnight Camping Sandhills Park Jail Grounds Park Concessions 4-H Barn	Courthouse Kermit Community Center Westside Community Center Kermit Library Precinct Building Human Services Building Hospital Grounds Senior Citizens Center Fulbright Park

which motion became an order of the Court upon the following vote:

Ayes: Commissioners Stevens, Wolf, Neal and Thompson
Noes: None

At 10:00 o'clock A.M. bidding for Phase IV of construction improvements to County Park in Kermit consisting of: site preparation, construction of pavilion and maintenance barn, landscaping fencing and signage was declared closed. Only one (1) bid was received and after reviewing same, a motion was made by Commissioner Neal and seconded by Commissioner Thompson that the bid of Aquatic Recreational, Inc. in the following amounts be accepted (1) Warehouse (Barn) – Restroom – Office Building \$379,400.00, (2) Pavilion

\$196,045.00 and (3) Storage Building \$19,995.00; which motion became an order of the Court upon the following vote:

Ayes: Commissioner Stevens, Wolf, Neal and Thompson
Noes: None

WEST TEXAS
PO BOX 1154
KERMIT, TX 79745
(432) 488-8743
(972) 767-3054 [FAX]



AQUATIC RECREATIONAL, INC.

NORTH TEXAS
4684 ADRIAN WAY
PLANO, TX 75024
(214) 909-8561
(972) 767-3054 [FAX]

COMMERCIAL PROPOSAL
for COUNTY OF WINKLER
KERMIT PARK MAINTENANCE BARN
KERMIT, TEXAS
Proposal issued: January 10, 2013

This proposal issued on this 10th day of January, 2013 for the price estimation of a warehouse (barn), office, restroom building in Kermit Texas.
This proposal includes commercial liability, auto and worker's compensation insurance and all applicable state and local taxes.
The work performed shall have a one year (1) service warranty for both labor and materials and applicable manufacturer's warranty as issued.
All pricing shall be turnkey and include materials, delivery, fuel surcharges, and installation.
Price includes bid bond, performance and payment bond.
This proposal is valid for 90 days.

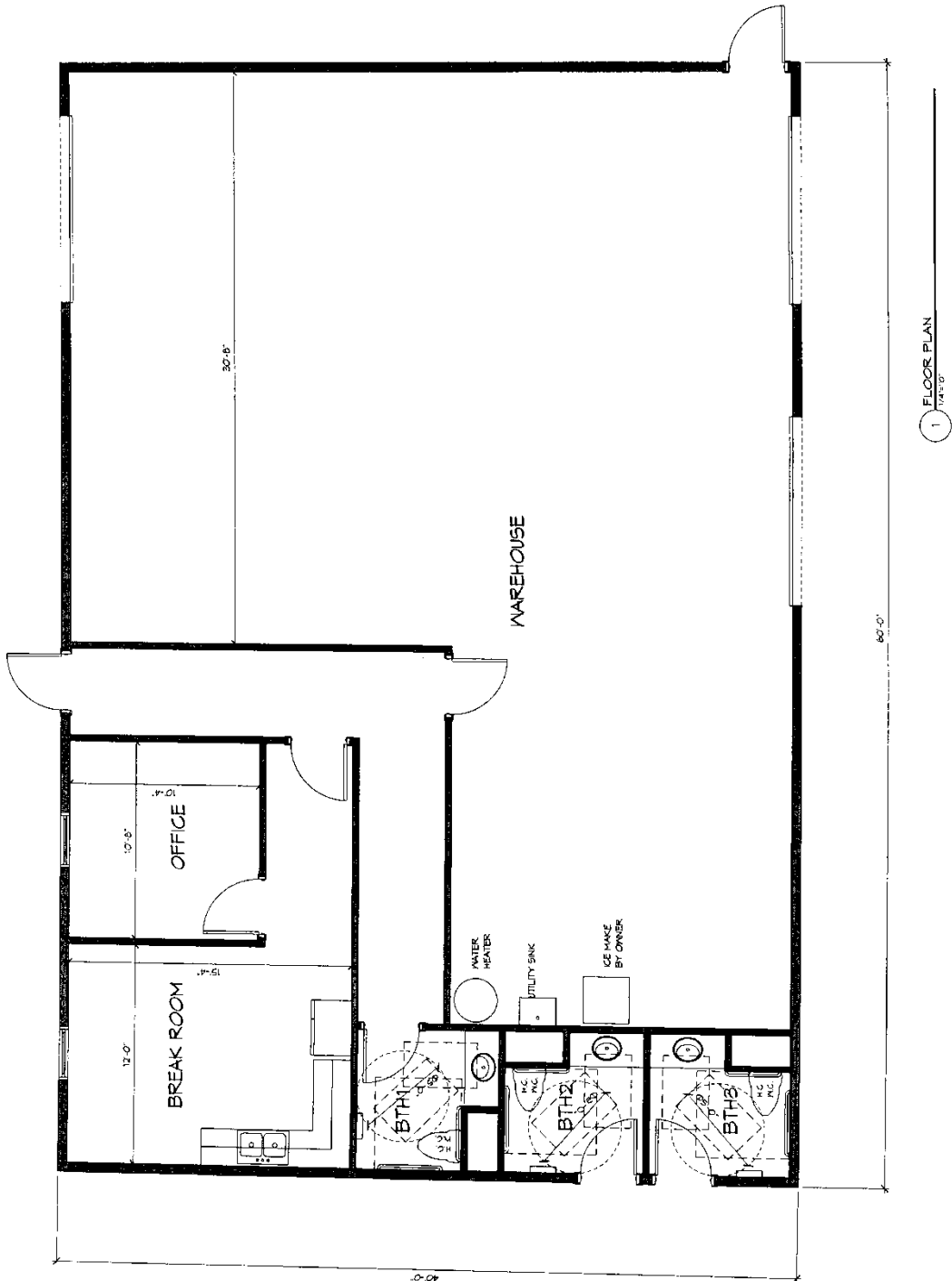
Warehouse (Barn) - Restroom - Office Building

- * Floorplan includes plumbing, electrical and HVAC for:
 - (3) ADA compliant restrooms (2 with exterior access, 1 with interior access)
 - (1) Break room area with counters and upper and lower cabinets and sink
 - (1) Office
 - (1) Storage area for ice machine (by others)
- Open warehouse/storage space per plan
- * Includes architectural, MEP, structural engineering, and site plans for construction.
- * Includes pre-construction and site layout.
- * Turnkey construction of 40' 0" x 60' 0", 2400 sf commercial building with finishout.
- * 4" Concrete slab on grade with rebar per required steel to concrete ratio.
- * Concrete entry to building to adjoining sidewalk.
- * 12' plate line elevation.
- * Metal building structure built and erected in accordance with engineered plans.
- * Metal copper roof to match existing building at park.
- * (3) 10' x 8' Motorized shop doors with remotes for entry to warehouse.
- * Windows in office and breakroom area

TOTAL PROPOSAL:..... \$ 379,400

Not Included in this proposal:

- * All utility meters or impact fees for meters if applicable.
- * Water and electricity to property.
- * Fill dirt if required
- * Additional grading if required.
- * Electric service billing for construction and permanent account set up for building.



WEST TEXAS
PO BOX 1154
KERMIT, TX 79745
(432) 488-8743
(972) 767-3054 [FAX]



NORTH TEXAS
4684 ADRIAN WAY
PLANO, TX 75024
(214) 909-8561
(972) 767-3054 [FAX]

COMMERCIAL PROPOSAL
for COUNTY OF WINKLER
KERMIT PAVILION & STORAGE
KERMIT, TEXAS
Proposal issued: January 10, 2013

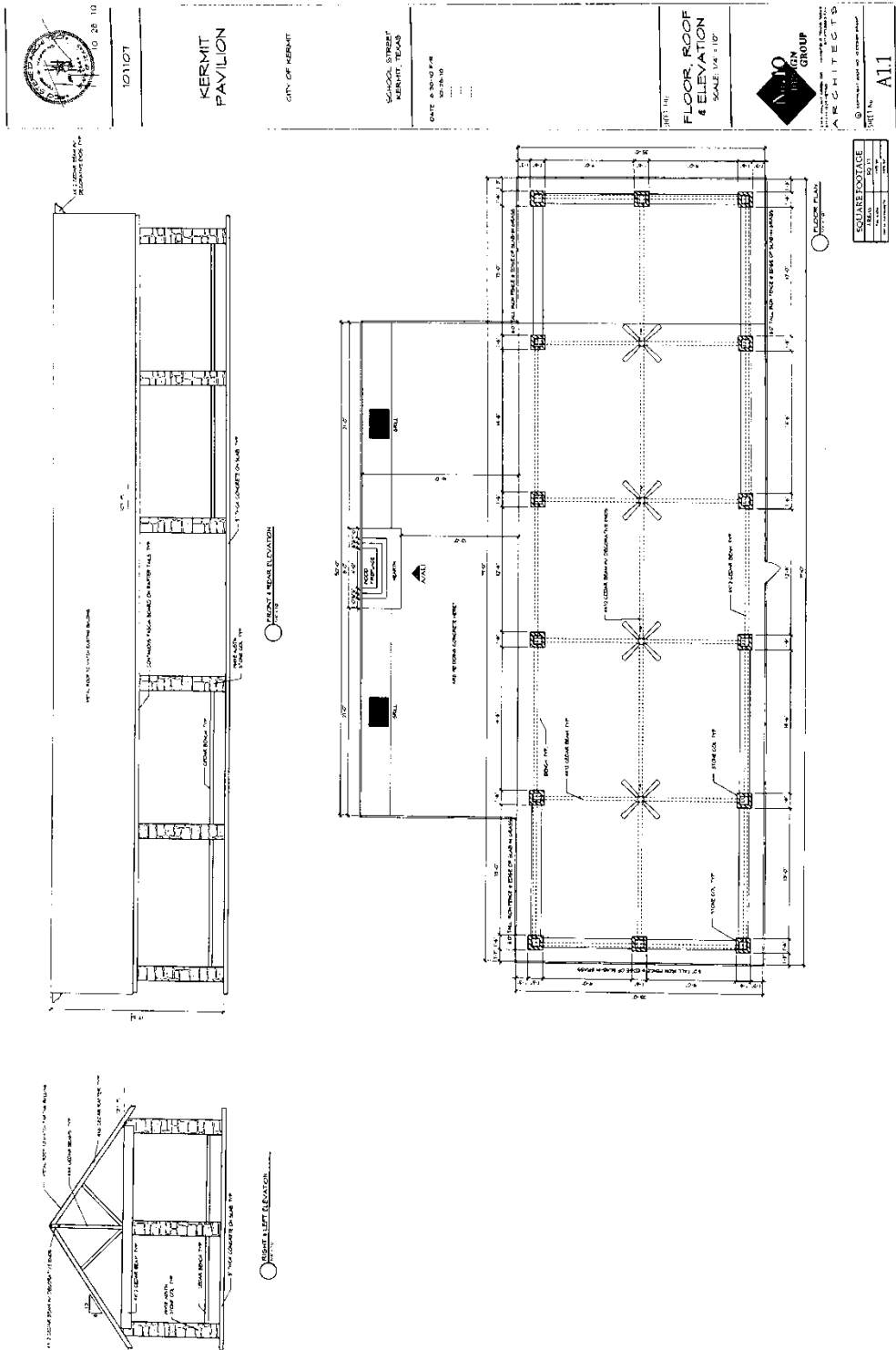
This proposal issued on this 10th day of January, 2013 for the price estimation of a Park Pavilion and Storage Building per plans attached.
This proposal includes commerical liability, auto and worker's compensation insurance and all applicable state and local taxes.
The work performed shall have a one year (1) service warranty for both labor and materials and applicable manufacturer's warranty as issued.
All pricing shall be turnkey and include materials, delivery, fuel surcharges, and installation.
This pricing includes bid bond, payment and performance bonds. Proposal valid for 90 days.

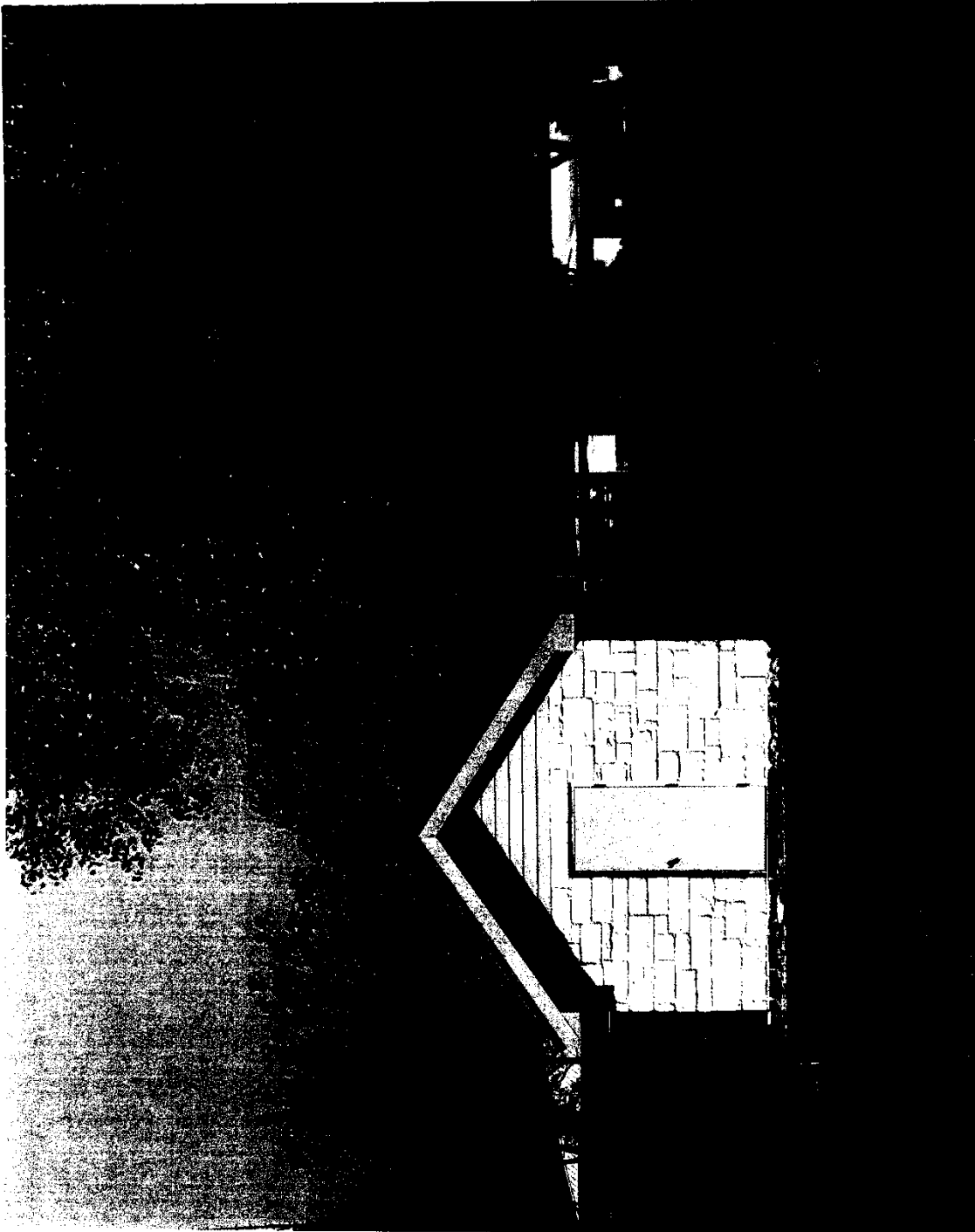
PAVILION

- Structure:** 79' x 25' Cedar wood pavilion per plan.
5" thick concrete slab
Includes wood seating ledges and roof beams per plan.
Wood fireplace and grills per plans.
- Veneer:** White Austin Stone veneer and columns.
- Roof:** Galveloom metal roof to match existing pool building to cover pavilion.
- Electrical:** Provide and install (4) ceiling fans in covered pavilion area.
- Fence:** Includes 6' wrought iron fence with main entry gate and fire exit gate
- Entry:** Entryway with HC ramp
- Features:** Rock veneer wood fireplace with stone hearth and 2 charcoal bar-b-que grilling stations per plans.
- Subtotal:**..... \$ 196,045

STORAGE BUILDING

- Structure:** 12' X 16' Storage building
4" thick concrete slab
6' Metal door
- Veneer:** Block and White Austin Stone veneer
- Roof:** Galveloom metal roof to match existing pool building
- Subtotal:**..... \$ 19,995





There were no hospital software project claim(s) for the Court to consider at this time.

A motion was made by Commissioner Neal and seconded by Commissioner Thompson to approve payroll; which motion became an order of the Court upon the following vote:

Ayes: Commissioners Stevens, Wolf, Neal and Thompson
Noes: None

There were no line item adjustment(s) or budget amendment(s) for the Court to consider at this time.

A motion was made by Commissioner Neal and seconded by Commissioner Thompson to receive the following Monthly Reports from County Officials of fees earned and collected for the month of December, 2012;

MONTHLY REPORTS

For the Month of

December 2012

	Date Received	Amount
Steve Taliaferro, Co Attorney Fee \$75.00 Hot Check \$30.00	1-7-13	\$30.00
Bonnie Leck, County Judge	1-4-13	\$4.00
Patti Franks, Tax Assessor	1-11-13	\$1657.14
Shethelia Reed, County Clerk	1-3-13	\$23,474.00
Glenda Mixon, JP Precinct #2	12-28-12	\$1345.00
Sherry Terry, District Clerk	1-4-13	\$1944.26
DeLynn Trammell, JP Precinct #1	12-28-12	\$8976.75
George Keely, Sheriff	1-7-13	\$2599.20
Steve Dunn, Probation		
J.R. Carpenter, Commissioner Precinct #1		
Robbie Wolf, Commissioner Precinct #2		
Randy Neal, Commissioner Precinct #3		
Billy Ray Thompson, Commissioner Precinct #4		
Jeanna Willhelm, Auditor Investment		
Eulonda Everest, Treasurer	1-3-13	3,661,214.16
Lee Wilson, Constable Pct # 2	NOV 12, DEC 12,	1/2/13



which motion became an order of the Court upon the following vote:

Ayes: Commissioners Stevens, Wolf, Neal and Thompson
 Noes: None

A motion was made by Commissioner Neal and seconded by Commissioner Thompson to examine and approve bills over \$500.00 and place in line for payment; which motion became an order of the Court upon the following vote:

Ayes: Commissioners Stevens, Wolf, Neal and Thompson
 Noes: None

There were no claims against the County for the Court to consider at this time.

A motion was made by Commissioner Neal and seconded by Commissioner Thompson to approve claims against the County and pay as per list of vouchers submitted; which motion became an order of the Court upon the following vote:

Ayes: Commissioners Stevens, Wolf, Neal and Thompson
 Noes: None

A motion was made by Commissioner Neal and seconded by Commissioner Thompson to adjourn the meeting; which motion became an order of the Court upon the following vote:

Ayes: Commissioners Stevens, Wolf, Neal and Thompson

Noes: None

MINUTES approved the _____ day of _____, 20____.

COUNTY CLERK